



SURPLUS MANUFACTURING ASSETS FOR SALE BY TENDER CATALOGUE

For any queries phone:
Bill 027 778 8552
Rex 021 0810 0774

Viewing Times

Strictly By Appointment Only - (Wednesday 2nd December , Thursday 3rd December , Friday 4th December) To arrange a viewing appointment please contact - Bill Valentine, ph-027 7788552.

Viewing Location

Methven Limited , 41 Jomac Place , Avondale , Auckland 1026



Lot #1 - DUST EXTRACTION SYSTEM- SUPER JET 5

Dust Extration System-Super Jet 5.

Specifications- Antistatic power pulse cleaning Dust Extraction System with explosion membrane and scrapper base-50 c/m cubed/1...Year 2016 ; includes Ladder with work Platform; External Ducting ; Internal Ducting 25 metres approx. Has a 10 metre stack. Complete with control panel ; JKF Fan, Type-JK70 MTDL ,55kw ,1480 min-1 ,400/690v ; JKF Rotary Valve ; Bag Length-5 metres ; Filter Area-269 m cubed; Weight approx-4110 kg ; Dimensions-9000 mm (h) x 2420mm x 2420mm . Please see photos for other Technical Information. A manual is available onsite to view.

* For Extraction and Trucking - Approved Contractor, Rick's Trucking , contact Richard - mobile 021434428.



Lot #2 - DUST EXTRACTION SYSTEM-JKF

Dust Extraction System-JKF ,Type DS-20-K ; Year-2010. Conical bottom ; 5.5 metres high approx ; pos A-3 20 c/m cubed -1 ; T max -70 deg. Comes with control panel ; JKF 40 Fan -max 3500 min -1 ; 11 kw electric motor. With 400 mm external ducting from fan to baghouse. Has stack approx-9 metres. There is approx 35 metres of internal ducting. Please see photos for other information.

* For Extraction and Trucking - Approved Contractor, Rick's Trucking , contact Richard - mobile 021434428.



Lot #3 - PVD COATING MACHINE (HUICHENG)

PVD (Physical Vapor Deposition) Coating Machine & Oven. Date Of Manufacture - 2018. Model - HCCA -1215 , Machine Type- Cathodic Arc Vacuum Coating System with a plurality of arc evaporation source, mainly applied to deposit high performance decorative metal film on a variety of hardware by arc evaporation technology such as Tin, Ticon, Tiain, CrN, CrCn, ZrN, ZrcN, Gu and other customized special coatings.

Technical Parameters Of Machine.

1) Vacuum Chamber - Dimensions - 1250mm dia x 1500mm (h) . Vertical Door/Front Door with (2) visible windows. Vacuum Chamber Material SUS304 stainless steel, high temp annealing stress for assurance of machine keeping shape.

2) Pumping Feature - Limited Vacuum: 8.0×10^{-4} Pa from the atmosphere to the deposition time less than 15 minutes pumping time. Atmosphere to 6.6×10^{-3} Pa -15 min. Pressure keeping rate - 0.67 Pa/hr.

3) Process Time from pumping, clean, activation, coating deposit , cool (doesnt include loading and

unloading time) to end, is approx -70 minutes.

Total power approx - 55 kw (three phase , 4 wire + ground wire).Total Weight-8500 kg not including inlet water and other interface devices. Comes complete with water cooling tower, Ling Hou model - AWA 30 , Flow rate - 23.4 M cubed/H., water pump; water chiller model LF-40, 40 HP, R22, 380V ; 1 x galvanised stand alone frame with Spirax/Sarco dosing control system, circulating water pump, 2 x isolating Control Cabinets. Telemecanique two hand control unit ; Industrial oven-120 degree overall dimensions-1900mm (h) x 1000mm (d) x 1510mm (w) .Internal Oven dimensions -1530mm (h) x 900mm (d) x 1200mm (w).

Operating Manuals and electrical diagrams available onsite.

* For Extraction and Trucking - Approved Contractor, Rick's Trucking , contact Richard - mobile 021434428.



Lot #4 - ROBOSONIC FULL AUTOMATIC ULTRASONIC CLEANING MACHINE - 8 TANK . NEW NOT COMMISSIONED

Full Automatic Ultrasonic Cleaning Machine with 8 tanks. Model ROBOSONIC-10800 - 8C; Year-2019/01/02. Designed by Keer Cleaning Equipment Co Ltd.This equipment is a full automatic ultrasonic cleaning & drying line. This is a continuously working machine , controlled by PLC and human input to finish the ultrasonic degreasing (circulation filtration), ultrasonic dewaxing, (circulation filtration) ultrasonic rinse, pure water/deionized rinse, bubbling rinse, medium pressure nebulization spraying, high pressure water rinse with pull drainage, hot air drying and automatic temp control heating. Operator puts product into trolleys and places into loading station.The whole work process except pushing in/out is automatically completed by the machine. The cleaning part of the whole machine is a closed structure and the upper half of the outer cover is a window structure. It comes equipped with a circulating filtration system for the recycling of cleaning fluid. There is an independent electric control cabinet and all measuring instruments use metric units.

Ultrasonic Degreasing (tank 1), Ultrasonic Dewaxing (tank 2). Cleaning Temp-75 degrees, Tank inner size , 900mm x 450mm x 1650mm ,effective liquid level-1550mm. Material of tank body is 2.5mm SUS304, with a silicate cotton layer for thermal insulation and noise reduction. Liquid waste discharge system is controlled by manual drain valve.

Ultrasonic System - Ultrasonic frequency 28KHZ; Ultrasonic Power 1.8KW*6=10.8KW; Frequency sweep control, power continuously adjustable, independently controllable , equipped with current indicator; Ultrasonic transducer 108 pcs, 100w per piece, 18 ultrasonic transducers will be fixed in a pack.

All manuals will be available onsite on inspection days. This line is new and has only been assembled for testing at the manufacturer's site.

* Please Note: One of the photos shows this unit complete but it has been disassembled and packed into (2) x 40 foot rental shipping containers. The shipping containers are not included in the purchase price.



Lot #5 - HUNZIKER AUTOMATIC THROUGH FEED BLASTING MACHINE

Hunziker Fully Automatic Through Feed Blasting Machine, Type SBM 1210. Complete with infeed product conveyor, 2200mm (l) x 2150mm (h) x 820 mm(w).Steel Belt width-245mm. Main Machine dimensions, 2300mm x 1200mm x 4100mm (h); output chute 700mm wide; control panel 1820mm x 420mm x 980mm (w); includes section of ducting from shot blast to main dust extraction ducting.

Production Rates: Hot standard Brass; 1000kg/hr; Aluminium investment castings 250 kg/hr; Steel parts 1000kg/hr; Zinc Castings 750 kg/hr.

Overall dimensions; 5850mm (l) x 3500mm (w) x 4120mm (h).

Range of application work piece dia 10 - 230mm; min thickness; 10mm max length of components 280mm.

Blasting system 1 blasting wheel, 7.5 kw each, connected electric load 15kw. Voltage-3 x 380v-50hz..weight-4300kg.

Manuals are all available at viewing. See photos for other information.

* For Extraction and Trucking - Approved Contractor, Rick's Trucking , contact Richard - mobile 021434428.



Lot #6 - LOW PRESSURE DIE CASTING MACHINE-KWC (SWITZERLAND)

Low Pressure Die Casting Machine (KWC Engineering) made in Switzerland. Machine type-2021, Year-1995 has had upgrades. Comes complete with furnace control panel 5800mm (l) x 2400mm(h) x 610mm (d); Water Cooling Tower-LiangChi; including galvanised standalone frame Spirax Chemical Dosing Station with Hofmann water tower controller; 2 x dosing pumps; (2) x 4 hp water circulating pumps.

Foot Print of casting machine including safety cage: 7000mm x 4800mm x 4300mm (h).

Casting Capacity : melting capacity, 300 kg/h; length of cycle 65-75s. Daily output per shift; 500 to 800 castings. Die changing time 10 minutes with pre heated dies. Multiple Die - up to 24 castings.

Die Dimensions: Max size , 500mm x 400mm ; Max thickness 2 x 100mm; Opening Stroke 370mm; Max Weight 150 kg; Closing Force 750 kg ; Ejector Force 650 kg; Ejector Stroke 50mm.

Melting Furnace: Channel induction furnace, 3 inductors; volume 1800 kg . Melting capacity 300 kg/hr; capacity per inductor 30 kw; cooling of inductor and furnace , coil-water.

Drives: Hydraulic, pressure/electric motor 80 bar/7.5kw. Electric Drive indexing gear 4.0 kw. Compressed air 5 bar..

Connected Load Mains Supply for 300 kg/hr furnace: 150 kva, 300A.

Energy consumption of furnace at constant temp of 950 degree-35kw; at maximum melting cap-300 kg/h 90kw.

Machine dimensions: 4600mm x 5100mm x 3600mm (h) ; Control Cabinet Dimensions-90 kw..5400mm x 600mm x 2500mm.

Machine weight:15,000 kg.

Please note: Brass billets and stillage of castings as photographed are not included in the sale.

Please see photos for more information. Manuals available onsite.

* For Extraction and Trucking - Approved Contractor, Rick's Trucking , contact Richard - mobile 021434428.



Lot #7 - CORE DRYING ROOM

Core Drying Room comes complete with: 1 x Temperzone Air conditioning unit; 2 x roller doors; drying trollies; Plastic Product Bins.

Dimensions 6400mm(l) x 2420mm x 2430mm(h).



Lot #8 - FOUNDRY CORE MAKING MACHINE

Foundry Core Making Machine: Roperwerk H25A-EW. Comes with Unitronics controller.



Lot #9 - FOUNDRY CORE MAKING MACHINE

Foundry Core Making Machine: Roperwerk H25A-EW with Unitronics controller.



Lot #10 - FOUNDRY CORE MAKING MACHINE

Foundry Core Making Machine: MR INDUSTRIA MECCANICA ,TYPE SPARA ANIME SP-2-5 comes with Unitronics Controller.



Lot #11 - BEAD BLASTER

Bead Blaster, Abrasive Blasting Services. Model PB1200, Year 2004. Comes with filter cabinet.



Lot #12 - DIE STORAGE RACK

Die Storage Rack with 200 kg Chain Hoist. Has 20 x adjustable sliding shelves. Dimensions 5100mm x 1440mm(d) x 2090mm(h)

* For Extraction and Trucking - Approved Contractor, Rick's Trucking , contact Richard - mobile 021434428.



Lot #13 - STEEL CUT OFF SAW

Steel Cut Off Saw with safety enclosure and Unitronics controller.



Lot #14 - INDUSTRIAL BANDSAW

Industrial Bandsaw with tilt table .Throat 850mm.



Lot #15 - DIE HYDRAULIC SCISSOR LIFT TROLLEY

Die Hydraulic Scissor Lift Trolley with rotating turntable. Lift capacity 500 kg.



Lot #16 - DIE HYDRAULIC SCISSOR LIFT TROLLEY

Die Hydraulic Scissor Lift Table with rotating turntable. Weight 500 kg lift.



Lot #17 - HYDRAULIC SCISSOR LIFT TROLLEY

Hydraulic Scissor Lift Trolley. 500kg lift.



Lot #18 - HYDRAULIC SCISSOR LIFT TROLLEY

Hydraulic Scissor Lift Trolley. Lift capacity 250 kg (faulty, needs new seals).



Lot #19 - DIE LIFTER, RICHMOND

Die Lifter : Richmond, capacity 150 kg; Lifting Height 1100mm; Fork Length 500mm.



Lot #20 - INDUSTRIAL WORK TABLE

Industrial Work Table comes with Record No6 Vice. Dimensions: 2470mm x 1000mm x 900mm. Heavy Steel Frame with double ply top. Excludes contents on top of the bench.



Lot #21 - FOUNDRY CORE SAND MIXING MACHINE

Fordath Core Sand Mixing Machine. Type serial number 2069. Bowl diameter 525mm x 380mm (d).



Lot #22 - FOUNDRY CORE SAND MIXING MACHINE

Foundry Core Sand Mixing Machine. Brand unknown. Ribbon type mixer. Mixing area 600mm x 400mm x 400mm (d).



Lot #23 - DOOSAN , DNM 500 , VERTICAL CNC MACHINING CENTRE

Doosan, DNM 500, Vertical CNC Machining Centre. Year 2016.

Table Type -"T" slot.. Spindle to table surface-150 to 660mm..Surface Shape-4-125 x 18H8 mm..Max work piece height-465mm..Table Size-1200mm x 540mm..Allowable load-800 kgf.

Stroke-X Axis -1020mm - Rapid traverse-36 m/min..Y Axis-540mm-Rapid traverse-36 m/min...Z Axis - 510mm-Rapid traverse-30 m/min.

Max cutting feedrate -1-15000 mm/min...Ball Screw (dia x lead) x - dia 40 x p12mm..Y- dia 40 x p12mm..Z- dia 40 x p10mm. Accuracy Positioning +- 0.005/Full Stroke..Repeatability +- 0.002mm.

NC System - Fanuc.

Motor Type - a12/10,000i..motor power-con 30min,15mm..Spindle speed - 8,000 rpm,basic speed - 1350rpm,Max torque - 106.9 nm, tool clamping-750, orientation built in position coder, taper type-Iso 40 7/24 taper.

Motor Type - ap18/8,000i..motor power-11/15 kw,19/15..spindle Speed - 8,000 rpm, basic speed-680 rpm,Max torque-210(15min)Tool clamping - 750, orientation built in position coder, Taper Type-ISO 40 7/24 taper.

Motor Type - aT8/12,000i..motor power-11/18.5 kw..Spindle Speed - 12,000 rpm,basic speed-1500rpm..max torque-117(10 min) Tool clamping force -750 orintation built in position coder..Taper type - ISO 40 7/24 taper.

Automatic Tool Changer - Cam Type - ATC..Tool Shank - BT 40..pull stud - Nikken ps806..Tool select type memory random. Max tool dia-80(cont) dia - 76 continuous, dia - 125 adj pots empty..Max Tool Length - 300mm..Max Tool Weight - 8 kgf..T-T-T Time-1.3 sec.

Comes with some tooling.

*ALL MANUALS WILL BE AVAILABLE TO LOOK AT ON VIEWING DAY.

* For Extraction and Trucking - Approved Contractor, Rick's Trucking , contact Richard - mobile 021434428.



Lot #25 - MIYANO CNC LATHE - BNC 42 C5

MIYANO BNC42 C5 CNC LATHE, complete with Fedek Bar Feeder & Chip Conveyor. Year 2012; 11.8kw, 3 phase; Power Supply 15.6 Kva.

Serial Number-BC56274C.

Machining Capacity : max 42mm min-12mm..Chuck Work Capacity-75mm..Max Work Length-bar:150mm..chuck:80mm..centre:175mm.

Spindle Nose-flat..OD of Spindle Nose-110mm...inner dia of draw tube-43mm..Chucking System-hydraulic Cylinder..Spindle Speed Drive-50-5000 min..Spindle Drive Motor-ac 5.5/7.5 kw..Spindle Speed-infinitely variable..Drive System-Rib Belt..Turret Slide axis controlled-2..Turret Stations-8..Max Index Clearance-dia 390mm..Distance across Flat-200mm..ID tool hole size-dia 25mm..Tool Shank Size-20 x 20 mm..Max Slide Stroke(X Axis-100mm) (Z Axis-185mm..Rapid Traverse Speed-(X Axis-472 lpm 12m/min) (Z Axis-589 lpm 15/m min)..X Axis Servo Motor-1.2 kw..Z Axis -1.2 kw..Index Time-0.2 sec/station 1.sec/180 degree.. Tail Stock-Max Slide Stoke-175mm.Rapid traverse Rate-8m/min..Max Slide Force-435kg..Sleeve Size-MT No2(no1..no3) hydraulic.

Comes with some tooling and a new spare motor for chip conveyor.

*Manuals will be onsite to view.

* For Extraction and Trucking - Approved Contractor, Rick's Trucking , contact Richard - mobile 021434428.



Lot #26 - MIYANO CNC LATHE - BNC 42 C5

MIYANO BNC42 C5 CNC LATHE, complete with Fedek Bar Feeder & Chip Conveyor. Year 2008; 11.8kw, 3 phase; Power Supply 15.6 Kva.

Serial Number-BC56842C.

Please note; the Machine Year-2008

Machining Capacity : max 42mm min-12mm..Chuck Work Capacity-75mm..Max Work Length-bar:150mm..chuck:80mm..centre:175mm.

Spindle Nose-flat..OD of Spindle Nose-110mm...inner dia of draw tube-43mm..Chucking System-hydraulic Cylinder..Spindle Speed Drive-50-5000 min..Spindle Drive Motor-ac 5.5/7.5 kw..Spindle Speed-infinitely variable..Drive System-Rib Belt..Turret Slide axis controlled-2..Turret Stations-8..Max Index Clearance-dia 390mm..Distance across Flat-200mm..ID tool hole size-dia 25mm..Tool Shank Size-20 x 20 mm..Max Slide Stroke(X Axis-100mm) (Z Axis-185mm..Rapid Traverse Speed-(X Axis-472 lpm 12m/min) (Z Axis-589 lpm 15/m min)..X Axis Servo Motor-1.2 kw..Z Axis -1.2 kw..Index Time-0.2 sec/station 1.sec/180 degree.. Tail Stock-Max Slide Stoke-175mm.Rapid traverse Rate-8m/min..Max Slide Force-435kg..Sleeve Size-MT No2(no1..no3) hydraulic.

Comes with some tooling .

*Manuals will be onsite to view.

* For Extraction and Trucking - Approved Contractor, Rick's Trucking , contact Richard - mobile 021434428.



Lot #27 - OKUMA CNC LATHE WITH BAR FEEDER

Okuma CNC Lathe model LB15 with Bartec Bar Feeder and Enomoto chip conveyor (bar feeder is faulty and needs attention) Serial No;1279; phase 3; 50 hz; Rated capacity; 28.1 KVA; full load current 39.1A; Largest motor rate 96A.

Has travelling centre, tail stock. Right angle and straight driven heads for milling.

Capacity: number of controlled Axis-3; Swing over bed diameter 530mm; Swing over carriage-dia 530mm; Swing over cross slide-dia 340mm; Distance between centres? Max turning dia x Length ? Spindle Dia 100mm; Spindle nose type; Jis A2-6; Taper Hole dia 70mm x 1/10 dia 90mm x 1/10; Through Spindle Hole-dia 62mm-dia 80mm; Number of spindle speed ranges 1 step; Spindle Speed 38-3800 rpm; Carriage (z axis) axis travel 520mm.

Comes with some tooling.

Manuals available for viewing onsite.

* For Extraction and Trucking - Approved Contractor, Rick's Trucking , contact Richard - mobile 021434428.



Lot #28 - OKUMA CNC LATHE WITH BAR FEEDER

Okuma CNC Lathe, model LB15-M with Hydrobar Sprint LNS bar feeder / loader. Comes with Enomoto chip conveyor.

Serial No-1279; phase 3; 50 hz; Rated capacity 28.1 KVA; full load current 39.1A. Largest motor rate 96A.

Has no tail stock just a turret. Complete with right angle and straight driven heads for milling.

Capacity: number of controlled Axis-3; Swing over bed diameter 530mm; Swing over carriage dia 530mm; Swing over cross slide dia 340mm. Distance between centres ? Max turning dia x Length ?

Spindle Dia 100mm; Spindle nose type; Jis A2-6.; taper Hole dia 70mm x 1/10 dia 90mm x 1/10; Through Spindle Hole-dia 62mm dia 80mm; Number of spindle speed ranges 1 step; Spindle Speed 38-3800 rpm; Carriage(z axis) axis travel 520mm.

Comes with some tooling.

Manuals available at viewing.

* For Extraction and Trucking - Approved Contractor, Rick's Trucking , contact Richard - mobile 021434428.



Lot #29 - FANUC CNC DRILL MATE MACHINING CENTRE

Fanuc CNC Drill Mate C model 10; Tooling BT40; 10 X Tool Rotary Turret; 6000 rpm; Rotary indexing table; Type AO4B 0073 A001; Year 1991; Power Supply 200v; 3 phase; 12 kva.

Vertical CNC Drill, capable of performing efficient rigid tapping and simple milling in addition to drilling and tapping.

* For Extraction and Trucking - Approved Contractor, Rick's Trucking , contact Richard - mobile 021434428.



Lot #30 - GNUTTI MECHANICAL MACHINING CENTRE

Gnutti Mechanical Machining Centre, automated transfer machine. 3 x vertical heads; this machine has 4 heads on the left; 4 heads on the right; 3 heads on top. One vertical head made for tapping or machining; tapping heads; recessing heads; machining heads. Takes ISO 30 taper tooling . Has hydraulic clamping.

* For Extraction and Trucking - Approved Contractor, Rick's Trucking , contact Richard - mobile 021434428.



Lot #31 - GNUTTI MECHANICAL MACHINING CENTRE

Gnutti Mechanical Machining Centre, automated transfer machine. 3 x vertical heads; this machine has 4 heads on the left; 4 heads on the right; 3 heads on top. One vertical head made for tapping or machining; tapping heads; recessing heads; machining heads. Takes ISO 40 taper tooling.

Central Turret with 8 stations with hydraulic clamping.

* For Extraction and Trucking - Approved Contractor, Rick's Trucking , contact Richard - mobile 021434428.



Lot #32 - SUGINO DRILLING AND TAPPING MACHINE

Sugino Drilling and Tapping Machine. Self feeder model MSPU 1000/1200 rpm. Stroke max 99.9mm; chucking capacity 13mm. Tapping system/clamping system; 3 phase, 1.1 kw motor, 20 amp, 5 pin plug. This unit is on castors.

Dimensions : 2200mm (h) x 1400mm (l) x 1100mm..



Lot #33 - PEDESTAL DRILL ON STAND

Pedestal Drill on stand, Meteor Manufacturing. 3 phase; overall dimensions 1700mm x 640mm x 640mm.



Lot #34 - SMALL HYDRAULIC PRESS

Small Hydraulic Press with power pack; 3 phase; 4 pin 20a plug; 7.5 hp. Comes on castor trolley. Ram spear diameter 35mm approx. Tonnage unknown.

Dimensions 2350mm(h) x 1100mm x 730mm.



Lot #35 - AIR RECEIVER

Air Receiver on 300mm legs . Cylinder dimensions 1400mm (h) x 380mm dia . Certification details unknown.



Lot #36 - HYDRAULIC PRESS

Hydraulic Press complete with Vickers hydraulic power pack 10 hp. Ram spear diameter 40mm approx; 3phase ; 4 pin plug. Comes on trolley.

Dimensions 2300mm (h) x 900mm x 700mm.



Lot #37 - OIL DISPENSING UNIT

Oil Dispensing Containment Vat. Comes complete with (3) mild steel 295 litre tanks and dispensers .

Specifications ; Vat dimensions 2660mm (l) x 790mm x 890mm (h)..The tanks have previously contained Hytec AW 100; Elfoha 546; slideway 68 oils .

NOTE: This Lot does not come with the coolant tub and cutting fluid within the containment vat .



Lot #38 - BRIDGEPORT MILLING MACHINE

Bridgeport Milling Machine with XYZ Readout; Table length 1070mm; Has a broaching head; Machine Vice; R8 Taper. Comes with some Iscar and Carboly facemills , and other tooling.

NOTE: Power feed is not operational.



Lot #39 - COLCHESTER LATHE , STUDENT 1800

Colchester Lathe Student 1800. Swing over bed 340mm; Swing over cross slide 210mm; max distance between centres 610mm; Spindle Bore-40mm; Spindle Speeds 22-1800 rpm; Motor 3 hp; Comes with 3 jaw chuck; 4 jaw chuck; tool holders and some tooling.

* For Extraction and Trucking - Approved Contractor, Rick's Trucking , contact Richard - mobile 021434428.



Lot #40 - COLCHESTER LATHE MASCOT 1600

Colchester Lathe Mascot 1600. Comes with 3 jaw; 4 jaw; face plate; steady; tool holders; some tooling; Acu Readout X-Y.

Specifications: Turning dia 425mm over bed; Turning dia 265mm over slide; Max Swing dia 711mm; Centre distance 80mm; Main Drive Power 12.5 hp; Spindle Bore 76mm; Length of gap 312mm; Turning length 80mm; Spindle turning Speed Range 20-1600rpm; Swing over saddle-267mm; Swing over bed 433mm; 415v 3 phase.

Dimensions; 3100mm x 1600mm (h) x 1150mm.

* For Extraction and Trucking - Approved Contractor, Rick's Trucking , contact Richard - mobile 021434428.



Lot #41 - BENCH SANDER DISC

Bench Sander Disc. Diameter wheel 305mm; single phase.

Dimensions :1150mm (h)x 500mm x 500mm.



Lot #42 - WELDING TABLE

Heavy Duty Welding Table.This was a cast surface table and is very heavy. Comes with pipe vice.

Dimensions 2140mm (l) x 840mm x 940mm.



Lot #43 - DOUBLE PEDESTAL GRINDER

Double Pedestal Grinder, GMF-8"; with grinding wheel and wire wheel. Single phase.

Height-1230mm.



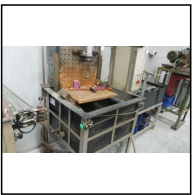
Lot #44 - DOUBLE PEDESTAL GRINDER

Double Pedestal Grinder, GMF 250MM, Single phase. Comes with Norton coarse and fine wheels. Height 1300mm .



Lot #45 - AIR OPERATED JIG UNIT

Air Operated Jig Unit. 1400mm (h) x 1080mm x 700mm.



Lot #46 - ANGLE PLATE / AIR PRESS

Angle Plate with Air Press.

Dimensions 2070mm (h) x 850mm x 900mm .Comes on castor trolley.



Lot #47 - BRAMLEY CUT OFF SAW

Bramley Cut Off Saw, Model UN-1; 3 phase; Has an 8" blade; motor-1-1/2 hp.

Dimensions excluding handle;1480mm (h) x 760mm x 840mm.



Lot #48 - WELDING TABLE

Welding Table. 2430mm l x 1250mm x 910mm h. Has a 10mm steel top plate. Comes with (2) vices, welding gear, 1 x red mobile welding screen.



Lot #49 - PEDRAZZOLI UNIVERSAL BROWN 32 TUBE BENDER

Pedrazzoli Universal Brown 32 Tube Bender. Comes with formers; 5.5 kw; 3 phase 4 pin plug.

Dimensions; 4100mm (l) x 700mm x 1200mm.



Lot #50 - "H" FRAME WORKSHOP PRESS

"H" Frame Hydraulic Jack Workshop Press. Has a high speed/ low speed hand pump. Ram spear width 70mm approx. Pressure gauge goes up to 40 ton.

Dimensions-1950mm high x 800mm.



Lot #51 - GEKA PUNCH AND SHEAR MACHINE

Geka Microcrop Punch and Shear Cropping Machine. Model Microcrop 36; 3 phase. Comes with assorted punches.

Dimensions-1350mm(h) x 420mm x 1030 mm.



Lot #52 - FLYPRESS

Flypress on Stand. Make, AE Ward & Co, Livery St, Birmingham.

Dimensions; 1950mm (h) x 700mm x700mm. Very Heavy.



Lot #53 - PARTS WASHER

Parts Washer. Well Used.



Lot #54 - AIR COMPRESSOR

Air Compressor, Ash Air; single phase; cylinder length 820mm.



Lot #55 - HYDRAULIC FILTRATION UNIT

Hydraulic Filtration Unit On Trolley. Has Vickers components; 3 phase 16A 4 Pin.



Lot #56 - ERLO GEARED HEAD COLUMN DRILLING MACHINE -TCA-50

Erlo Geared Head Column Drilling Machine Model TCA-50, manual geared table rise and fall; 4 Step quill feed; distance from spindle to Column 400mm; column dia 200mm; Rotating Table Dimensions 560mm x 660mm; Drilling Capacity 50mm; Tapping Capacity M36; Feed; 0,10-0,20-0,30-0,40..Engine power 4hp; Drilling Depth 230mm; MT4 Spindle Taper; spindle Speeds 45 to 1115 rpm ; Coolant pump; 3 phase-4 pin-20A.

Dimensions; 2547mm x 1060mm x 600mm; Weight-850 kg approx.



Lot #57 - CUT OFF SAW (LUX)

Lux Cut Off Saw with roller infeed stand 3120 mm x 680mm x1240mm, model MC350NFA ,415v, 5 hp ., with auto manual clamping system. Some spare 300mm blades.

Dimensions;1850mm (w) x 1600mm (h) x 1300mm (d). Coolant tank missing.



Lot #58 - HEAVY DUTY STEEL RACK

Heavy Duty Steel Rack. 4 tier. Dimensions 2080mm(l) x1250mm (d) x1880mm (h)



Lot #59 - TOOL AND CUTTER GRINDER ,STANKOIMPORT.

Tool and Cutter Grinder Stankoimport Model 3BS42. Includes trolley rack with a very big assortment of diamond and abrasive grinding wheels.Pallet of machine accessories, 2 x Tote bins of new wheels. Complete with Newall DP7 Digital (XY) Readout.



Lot #60 - CUTTING FLUID PUMPING SYSTEM

Cutting Fluid Pumping System. Comes with: plastic coolant Tank-700mm x 700mm x 910mm; Dosing System , 1 x single phase pump with pressure tank; Part 200 litre drum of Visolcut 3/d200l.Solocut 3000.

Note: Does not include the big Containment Vat . Does not include dosing system, Dosatron DERE 10.



Lot #61 - WORK BENCH WITH VICE

Work Bench with No5 Record Vice; Galvanised steel Top with (3) cupboards.

Dimensions-1520mm (l) x 970mm x 650mm.



Lot #62 - WORK BENCH WITH VICE

Work Bench with M132 Woden Vice; Galvanised steel Top with (3) cupboards.

Dimensions-1520mm x 970mm x650mm.

NOTE: The cupboard you are tendering on does not have the same vice as the one in the photo,it has the one in the above description.



Lot #63 - WORK BENCH WITH VICE

Work Bench with 5SP Dawn Vice and Galvanised steel Top with (3) cupboards.

Dimensions-1520mm x 970mm x 650mm.

NOTE: The cupboard you are tendering on does not have the same vice as the one in the photo, it has the one in the above description.

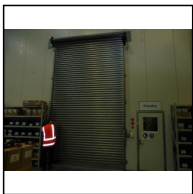


Lot #64 - WORK BENCH WITH VICE

Work Bench with No4 Record Vice and Galvanised steel Top with (3) cupboards.

Dimensions-1520mm x 970mm x 650mm.

NOTE: The cupboard you are tendering on does not have the same vice as the one in the photo, it has the one in the above description.



Lot #65 - ROLLER DOOR GALVANISED STEEL

Roller door galvanised (LPDC area). Complete with 3 phase electric drive motor and stop / start controller.

Dimensions; 3100mm (w) x 4500 mm (h) approx.



Lot #66 - ROLLER DOOR CLEAR VIEW

Roller door , clear view, Duffet (PDV area) .Complete with 3 phase electric drive motor and stop / start controller.

Dimensions; 2100mm (w) x 3100mm (h) approx.



Lot #67 - ATLAS COPCO GA37 VSD , AIR COMPRESSOR , YEAR 2016 WITH AIR DRYER , AIR RECEIVER AND SHIPPING CONTAINER ENCLOSURE.

*Atlas Copco Compressor specs as follows:

Type GA37 VSD+

Serial No; AP1831042

MAWP 13 bar

QV 115 L/S 243.6 cfm 6.9 m3/min

Voltage 400V

Motor 37 KW , 9,000 r/min

Year 2016

Running Hours 32,193

Motor Stats 477

Load Relay 53%

VSD 1-20% 11 %

Range Machine has run;

VSD 1 - 20% 11 %

20 - 40% 46%

40 - 60% 27%

60 - 80% 8%

80 - 100% 8%

* Air Dryer Model FD 245; Year 2014. Comp Air Pmax 14 bar.

* Air Receiver, Cylinder Dimensions 1900mm (h) x 800mm (d) mounted on external end of shipping container.

* Shipping Container; 20 ft with side opening doors.

* Oil Separator, Drukomart 30 (stand alone in the yard)

* Inline Water Filters x 3



Lot #68 - MEZZANINE FLOOR AND SUPPORT STRUCTURE

Mezzanine Floor and Support Structure. Complete with Safety Railing . The frame is bolted together.

Dimensions; 8000mm x 5600mm x 3800mm.

* For Extraction and Trucking - Approved Contractor, Rick's Trucking , contact Richard - mobile 021434428.



Conditions of Sale

As is where is

1.0 The purchase of the goods shall be on an "as is where is" basis.

Inspection

2.0 It is deemed that the Purchaser or their agent have made the appropriate inspection of the goods and that the purchase is based on knowledge of the condition of the goods.

Warranty

3.0 No warranties, expressed or implied are given, or representations made, in respect of the plant, vehicles or equipment offered; whether as to condition, title, the suitability of such items for any particular purpose. Neither the Vendor nor Industrial Resale accept any responsibility for the accuracy or completeness of any statements in the documents.

3.1 No warranties expressed or implied are given to the effect that the items comply with the requirements of any Statute, Regulation, Order or Bylaw. It shall be the sole responsibility of the Purchaser to ensure that the requirements of all Statutes, Regulations or Bylaws are complied with in relation to the machinery, vehicles or electrical equipment purchased.

Payment

4.0 Payment: Bank-to-bank transfer only. Please note that company cheques are not accepted

4.1 The purchaser or their agent must produce a copy of the paid GST invoice receipt to the onsite sales supervisor on the prescribed uplifting days for the items to be released.

Title

5.0 Title to the goods shall transfer to the successful Purchaser upon full payment of the purchase price.

Pickup

6.0 Pickup shall be ex the location as specified.

6.1 The purchaser shall be entitled to take delivery of the item/s only on payment of the total purchase price and only on the prescribed uplifting days.

6.2 The item/s shall be at the sole risk of the purchaser from time of payment.

6.3 The purchaser shall be responsible for all costs related to the removal of the item/s, including electrical and other service disconnection, decommissioning, loading, packaging, storage and security commencing immediately on purchase of the items.

6.4 The Purchaser shall be responsible for all costs related to the making good of the building , floor , roof , walls , property and services, where damage to , change to , is a result of removal of an item of plant or equipment.

6.5 Industrial Resale will require evidence of the Purchaser or their agents capacity to dismantle /remove major plant items in a safe manner, prior to any work being carried out on the Vendors site. Appropriate Public Liability Insurance will also be required.

Occupational Safety and Health

7.0 The purchaser and their representatives, must at all times while on the Vendor's site, comply with the relevant Health and Safety Acts and all other relevant legislation.

Liability

8.0 Risk of loss or damage, whether to the goods or persons or property, shall pass to the purchaser upon the transfer of title.

Law

9.0 The sales of goods shall be governed by the law of the country where the goods are located.

Default

10.0 If the purchaser fails to pay the full price within 7 days from the date of notification that it's Tender was successful, the Vendor may in its sole discretion cancel the sale. Such cancellation is without prejudice to any other remedies available to the Vendor under contract or law for damages or otherwise.

10.1 If the Purchaser pays for the item/s but fails to take delivery within the prescribed uplifting days, the Vendor may, after giving notice to do so , sell or dispose of item/s and apply any proceeds arising there from as follows: (i) in reimbursement of all costs of the selling or otherwise disposing of the item/s (ii) in payment for any residue , after reimbursement of (i) , to the purchaser of the items.

10.2 In addition to all the other remedies, the Tender manager reserves the right to refuse to consider any future Tenders from any purchaser who has defaulted under clause 10.0 + 10.1

Sale Management

11.0 The sale is being managed by Industrial Resale, on behalf of the Vendor. Industrial Resale is not authorized to express opinions, to offer advice or make representations to purchasers or to the public concerning the items which are the subject of this sale, and does not offer any warranties, representations or undertakings to any such parties.