



MACHINE TOOLING AND MANUFACTURING ASSETS FOR TENDER CATALOGUE

For any queries phone:
Bill 027 778 8552
Rex 021 0810 0774

Viewing Times

Monday 25th January, Tuesday 26th January, Wednesday 27th January , 8.00 am until 3.00 pm.

Viewing Location

Methven Limited , 41 Jomac Place , Avondale , Auckland 1026

Lot #1 - Bin Of Collets- ER Type

Bin of assorted collets ER type. ER 40, 32 etc.



Lot #2 - Bin Of Assorted Machine Drills

Bin of assorted machine drills. Metric/ Imperial. Does include Step Drills etc.



Lot #3 - Bin of Assorted Tool Holders x 22

Bin of assorted Tool Holders x 22. Good brands.



Lot #4 - Bin of Assorted Tool Holders

Bin of Assorted Tool Holders. Boring, turning etc. Brands Iscar, Kennametal.



Lot #5 - Bin Of Assorted Machine Taps

Bin of assorted Machine Taps. Metric / Imperial. Brands Somta, Sutton.



Lot #6 - Bin Of Assorted Machine Drills.

Bin of Assorted Machine Drills etc. Metric / Imperial. Good Brands.



Lot #7 - Bin Of Assorted Drills

Bin Of Assorted Drills. Metric / Imperial . Morse Taper 1 & 2 etc.





Lot #8 - Bin Of Assorted Tooling

Bin of assorted Tooling. Cutters, holders, counter sinks, milling cutters, etc.



Lot #9 - Bin Of Collets- ER Type

Bin Of Collets ER type, assorted sizes. ER 40, 32, etc.



Lot #10 - Bin of Assorted Boring Bars & Tool Holders

Bin of Assorted Boring Bars & Tool Holders.



Lot #11 - Bin Of Morse Taper Drills

Bin Of Morse Taper Drills. MT 1 & 2. Metric and Imperial.



Lot #12 - Bin of Assorted Tooling

Bin Of Assorted Tooling. Drills , Machine Taps etc.



Lot #13 - Bin Of Assorted Carbide Inserts

Bin Of Assorted Carbide Inserts. Partly used packets.



Lot #14 - Bin Of Gauges

Bin Of Go/No Go Gauges.



Lot #15 - Bin of Assorted Tool Holders & Cutters

Bin of Assorted Tool Holders & Cutters. Roller burnishing tools etc.



Lot #16 - Bin of Assorted Tooling

Bin of Assorted Tooling.



Lot #17 - Bin Of CNC Tooling

Bin of CNC Tooling. BT40..BT30 Collet Holders etc.



Lot #18 - Bin Of CNC Tooling

Bin of CNC Tooling. BT40-ER32 Tooling. Iscar Rotary Clamp etc.



Lot #19 - Bin Of BT40 Tooling

Bin Of BT40 Tooling. Collet Holders ER16, Iscar Attachments etc.



Lot #20 - Bin of Assorted Tooling

Bin of Assorted Tooling. BT40...Rotary Tool Clamp N0-40.



Lot #21 - Bin of Assorted Tooling

Bin Of Assorted Tooling. BT40 Collet Holders etc.



Lot #22 - Crate of Morse Taper Drills

Crate of Morse Taper Drills. Metric & Imperial. MT 5, 4, 3, 2 .



Lot #23 - Bin Of Morse Taper Drills

Bin Of Morse Taper Drills. MT 4, 3, 2. Metric / Imperial.



Lot #24 - Bin of Assorted Tooling, Facemills Etc

Bin of Assorted Tooling. Facemills , Rotary Tooling Clamp etc.



Lot #25 - Bin Of Collet Holders

Bin Of Mostly BT30 Collet Holders.



Lot #26 - Bin Of Collet Holders

Bin Of Collet Holders. BT30.



Lot #27 - Bin Of Metric / Imperial Taps

Bin Of Metric / Imperial Taps.



Lot #28 - Bin Of Assorted Machine Taps.

Bin Of Assorted Machine Taps.



Lot #29 - Bin Of Metric / Imperial Taps

Bin Of Metric / Imperial Taps.



Lot #30 - Bin Of Metric / Imperial Taps

Bin Of Metric / Imperial Taps.



Lot #31 - Bin Of Metric / Imperial Taps

Bin Of Metric / Imperial Taps.



Lot #32 - Bin Of Metric / Imperial Taps

Bin Of Metric / Imperial Taps.



Lot #33 - Bin Of Metric / Imperial Taps

Bin Of Metric / Imperial Taps.



Lot #34 - Bin Of Metric / Imperial Taps

Bin Of Metric / Imperial Taps.



Lot #35 - Bin Of Metric / Imperial Taps

Bin Of Metric / Imperial Taps.



Lot #36 - Bin Of Assorted Machine Taps.

Bin Of Assorted Machine Taps.



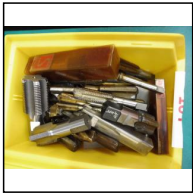
Lot #37 - Bin Of Assorted Machine Taps.

Bin Of Assorted Machine Taps.



Lot #38 - Bin Of Assorted Machine Taps.

Bin Of Assorted Machine Taps.



Lot #39 - Bin Of Assorted Machine Taps.

Bin Of Assorted Machine Taps.



Lot #40 - Bin Of Assorted Machine Taps.

Bin Of Assorted Machine Taps.



Lot #41 - Bin Of Assorted Machine Taps.

Bin Of Assorted Machine Taps.



Lot #42 - Bin Of Assorted Machine Taps.

Bin Of Assorted Machine Taps.



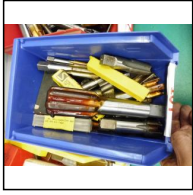
Lot #43 - Bin Of Assorted Machine Taps.

Bin Of Assorted Machine Taps.



Lot #44 - Bin Of Assorted Machine Taps.

Bin Of Assorted Machine Taps.



Lot #45 - Bin Of Assorted Machine Taps.

Bin Of Assorted Machine Taps.



Lot #46 - Bin Of Assorted Machine Taps.

Bin Of Assorted Machine Taps.



Lot #47 - Bin Of Assorted Machine Taps.

Bin Of Assorted Machine Taps.



Lot #48 - Bin Of Assorted Machine Taps.

Bin Of Assorted Machine Taps.



Lot #49 - Bin Of Assorted Machine Taps.

Bin Of Assorted Machine Taps.



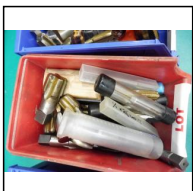
Lot #50 - Bin Of Assorted Machine Taps.

Bin Of Assorted Machine Taps.



Lot #51 - Bin Of Assorted Machine Taps.

Bin Of Assorted Machine Taps.



Lot #52 - Bin Of Assorted Machine Taps.

Bin Of Assorted Machine Taps.



Lot #53 - Bin Of Assorted Machine Taps.

Bin Of Assorted Machine Taps.



Lot #54 - Bin Of Assorted Machine Taps.

Bin Of Assorted Machine Taps.



Lot #55 - Bin Of Assorted Machine Taps.

Bin Of Assorted Machine Taps.



Lot #56 - Bin Of Assorted Machine Taps.

Bin Of Assorted Machine Taps.



Lot #57 - Bin Of Assorted Machine Taps.

Bin Of Assorted Machine Taps.



Lot #58 - Bin Of Assorted Machine Taps.

Bin Of Assorted Machine Taps.



Lot #59 - Bin Of Assorted Machine Taps.

Bin Of Assorted Machine Taps.



Lot #60 - Bin Of Assorted Machine Taps.

Bin Of Assorted Machine Taps.



Lot #61 - Bin Of Assorted Drills - Metric / Imperial

Bin Of Assorted Drills - Metric / Imperial.



Lot #62 - Bin Of Assorted Drills- Metric / Imperial

Bin Of Assorted Drills- Metric / Imperial



Lot #63 - Bin Of Assorted Drills- Metric / Imperial

Bin Of Assorted Drills- Metric / Imperial.



Lot #64 - Bin Of Assorted Drills- Metric / Imperial

Bin Of Assorted Drills- Metric / Imperial



Lot #65 - Bin Of Assorted Drills- Metric / Imperial

Bin Of Assorted Drills- Metric / Imperial.



Lot #66 - Bin Of Assorted Drills- Metric / Imperial

Bin Of Assorted Drills- Metric / Imperial.



Lot #67 - Bin Of Assorted Drills- Metric / Imperial

Bin Of Assorted Drills- Metric / Imperial.



Lot #68 - Bin Of Assorted Drills- Metric / Imperial

Bin Of Assorted Drills- Metric / Imperial.



Lot #69 - Bin Of Drills & Milling Cutters.

Bin Of Drills and Milling Cutters.



Lot #70 - Bin Of Assorted Drills- Metric / Imperial

Bin Of Assorted Drills- Metric / Imperial



Lot #71 - Bin Of Assorted Drills- Metric / Imperial

Bin Of Assorted Drills- Metric / Imperial.



Lot #72 - Bin Of Assorted Drills- Metric / Imperial

Bin Of Assorted Drills- Metric / Imperial.



Lot #73 - Bin Of Assorted Drills- Metric / Imperial

Bin Of Assorted Drills- Metric / Imperial.



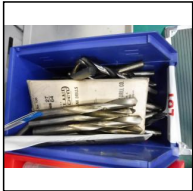
Lot #74 - Bin Of Assorted Drills- Metric / Imperial

Bin Of Assorted Drills- Metric / Imperial.



Lot #75 - Bin Of Assorted Drills- Metric / Imperial

Bin Of Assorted Drills- Metric / Imperial.



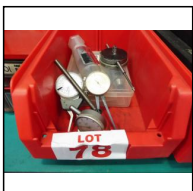
Lot #76 - Bin Of Assorted Drills- Metric / Imperial

Bin Of Assorted Drills- Metric / Imperial.



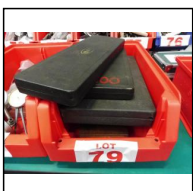
Lot #77 - Tool Cabinet With Deburring Gear

Tool Cabinet With Noga Deburring Gear.



Lot #78 - Bin Of Metrology Gear

Bin Of Metrology Gear. Mitutoyo Gauges, roller burnishing tool, Tap Chuck Spares etc.



Lot #79 - Bin Of Metrology Gear

Bin Of Metrology Gear. Some incomplete.



Lot #80 - Insize Centering Indicator (New)

Insize Centering Indicator (New)



Lot #81 - Bin Of Metrology Gear

Bin Of Metrology Gear. Mitutoyo & Moore and Wright Telescopic Gauges. Some Incomplete.



Lot #82 - Quantity Of Number & Letter Punches

Quantity Of Number & Letter Punches. Some incomplete.



Lot #83 - Quantity Of Collets

Quantity Of Collets. Hex Bar Collets etc.



Lot #84 - Box Of Roller Burnishing Tools

Box Of Roller Burnishing Tools. Brand Madison Industries.



Lot #85 - Bin Of Engineers Tools

Bin Of Engineers Tools. Air Tools, Hand Tools, Circlip pliers, Flaring tools. Brands include Shinano, Ingersol Rand etc.



Lot #86 - Engineers Machine Vice

Engineers Machine Vice. Dimensions - 540mm long, jaw width-160mm. Missing Handle.



Lot #87 - Clamping Set- Incomplete

Clamping Set- Incomplete.



Lot #88 - Bin Of Coventry Dieheads & Cutters

Bin Of Coventry Dieheads & Cutters.



Lot #89 - Box Of Coventry Dies

Box Of Coventry Dies, Resharpened.



Lot #90 - Bin Of Coventry Dieheads & Dies

Bin Of Coventry Dieheads & Dies.



Lot #91 - Bin Of Assorted Taps & Dies

Bin Of Assorted Taps & Coventry Dies.



Lot #92 - Box Of Coventry Dies

Box Of Coventry Dies.



Lot #93 - Automatic Recessing Tool (New)

Automatic Recessing Tool (New) . Cogsdill Nuneaton Ltd-AR 20- T7024.



Lot #94 - Automatic Recessing Tools x 2

Automatic Recessing Tools x 2. No ST2 TRB...No EXR-0 TRB.



Lot #95 - Air Ratchets x 2

Air Ratchets x 2. Model URW-9N-8MM...12MM. Made in Japan.



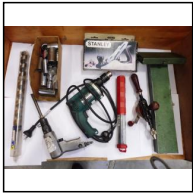
Lot #96 - Digital Pressure Gauge

Digital Pressure Gauge. Additel 680. Needs Batteries.



Lot #97 - Master Start LPG Kit - BOC

Master Start LPG Kit - BOC. May be incomplete. Comes with another box of welding sundries.



Lot #98 - Bin Of Assorted Tools

Bin Of Assorted Tools. Stanley planer, auger bits, makita power drill, assorted sockets, etc.



Lot #99 - Enerpac Hydraulic Pump

Enerpac Hydraulic Pump. Model- PAT 1102 N, Pressure 10,000 psi, 700 bar.



Lot #100 - Bin Of Helicoil Thread Inserts.

Bin Of Helicoil Thread Inserts.



Lot #101 - Bin Of Engineering Tools

Bin Of Engineering Tools. 1 x Maun Wad Punch. Assorted burnishing roller spares.



Lot #102 - Bosch Router & Bits

Bosch Router & Bits. Model-POF 1200 AE.



Lot #103 - Bin Of Spanners & Pipe Wrenches

Bin Of Spanners & Pipe Wrenches. 2 x Rigid 24" Pipe wrenches. Stahlwillie Spanner, etc.



Lot #104 - Machine Vice

Machine Vice. Length-380mm , jaw width-120mm.



Lot #105 - Bin Of Tooling Spares

Bin Of Tooling Spares.



Lot #106 - Air Machine Vice

Air Machine Vice. Length-450mm , jaw width-100mm.



Lot #107 - Shim Stock & Lathe Chuck Jaws

Shim Stock & Lathe Chuck Jaws. 3 x Lathe Chuck Jaws- 3 UV-315 ZU KNCS 315. UVB-315-012450. Brass Shim Stock.



Lot #108 - Bins Of Grinding & Cutting Wheels

3 x Bins Of Grinding & Cutting Wheels. 4 x Assorted Saw Blades.



Lot #109 - Explosion Proof Axial Fan

Explosion Proof Axial Fan. Type BTF-3C 12". Power-500w..240v. Speed 2800 rpm , Flow Rate 65m3/min.



Lot #110 - Big Socket Set SK Tools & Koken

Big Socket Set SK Tools & Koken. 1" & 3/4" Drive. Koken, Stahlwillie, Sk 65mm Sockets. Koken Ratchet, many Power Bars. Alot of gear here.



Lot #111 - Air Unit

Air Unit . Application Unknown.



Lot #112 - Air Vice

Air Vice. Length-530mm. Very heavy.



Lot #113 - Pallet Of Assorted Air Fittings

Pallet Of Assorted Air Fittings. Includes Festo Air Gear.



Lot #114 - Makro Grip Vices & Clamping Plate (Lang)

Makro Grip Vices with quick release Clamping Plate . Brand Lang. 4 x Vices, 1 x Plate. Plate size-560mm x 150mm x 27mm.

Precision equipment.



Lot #115 - Makro Grip Vices & Clamping Plate (Lang)

Makro Grip Vices with quick release Clamping Plates . Brand Lang. 4 x Vices, 1 x Plate. Plate size-560mm x 150mm x 27mm.

Precision equipment.



Lot #116 - Makro Grip Vices & Clamping Plate (Lang)

Makro Grip Vices with quick release Clamping Plates . Brand Lang. 4 x Vices, 1 x Plate. Plate size-560mm x 150mm x 27mm.

Precision equipment.



Lot #117 - Makro Grip Vices & Clamping Plate (Lang)

Makro Grip Vices with quick release Clamping Plates . Brand Lang. 4 x Vices, 1 x Plate. Plate size-560mm x 150mm x 27mm.

Precision equipment.



Lot #118 - Makro Grip Vices & Clamping Plate (Lang)

Makro Grip Vices with quick release Clamping Plates . Brand Lang. 4 x Vices, 1 x Plate. Plate size-560mm x 150mm x 27mm.

Precision equipment.



Lot #119 - Makro Grip Vices & Clamping Plate (Lang)

Makro Grip Vices with quick release Clamping Plate . Brand Lang. 4 x Vices, 1 x Plate. Plate size-560mm x 150mm x 27mm.

Precision equipment.



Lot #120 - Makro Grip Vices & Clamping Plate (Lang)

Makro Grip Vices with quick release Clamping Plate . Brand Lang. 4 x Vices, 1 x Plate. Plate size-560mm x 150mm x 27mm.

Precision equipment.



Lot #121 - Makro Grip Vices & Clamping Plate (Lang)

Makro Grip Vices with quick release Clamping Plate . Brand Lang. 4 x Vices, 1 x Plate. Plate size-560mm x 150mm x 27mm.

Precision equipment.



Lot #122 - Makro Grip Vices & Clamping Plate (Lang)

Makro Grip Vices with quick release Clamping Plate . Brand Lang. 4 x Vices, 1 x Plate. Plate size-560mm x 150mm x 27mm.

Precision equipment.



Lot #123 - Makro Grip Vices & Clamping Plate (Lang)

Makro Grip Vices with quick release Clamping Plate . Brand Lang. 4 x Vices, 1 x Plate. Plate size-560mm x 150mm x 27mm.

Precision equipment.



Lot #124 - Makro Grip Vices & Clamping Plate (Lang)

Makro Grip Vices with quick release Clamping Plate . Brand Lang. 4 x Vices, 1 x Plate. Plate size-560mm x 150mm x 27mm.

Precision equipment.



Lot #125 - Makro Grip Vices & Clamping Plate (Lang)

Makro Grip Vices with quick release Clamping Plate . Brand Lang. 4 x Vices, 1 x Plate. Plate size-560mm x 150mm x 27mm.

Precision equipment.



Lot #126 - Makro Grip Vices & Clamping Plate (Lang)

Makro Grip Vices with quick release Clamping Plate . Brand Lang. 4 x Vices, 1 x Plate. Plate size-560mm x 150mm x 27mm.

Precision equipment.



Lot #127 - Makro Grip Vices & Clamping Plate (Lang)

Makro Grip Vices with quick release Clamping Plate . Brand Lang. 4 x Vices, 1 x Plate. Plate size-560mm x 150mm x 27mm.

Precision equipment.



Lot #128 - Makro Grip Vices & Clamping Plate (Lang)

Makro Grip Vices with quick release Clamping Plate . Brand Lang. 4 x Vices, 1 x Plate. Plate size-560mm x 150mm x 27mm.

Precision equipment.



Lot #129 - Makro Grip Vices & Clamping Plate (Lang)

Makro Grip Vices with quick release Clamping Plate . Brand Lang. 4 x Vices, 1 x Plate. Plate size-560mm x 150mm x 27mm.

Precision equipment.



Lot #130 - Makro Grip Vices & Clamping Plate (Lang)

Makro Grip Vices with quick release Clamping Plate . Also includes mounting plates.

Brand Lang. 4 x Vices, 1 x Plate. Plate size-580mm x 210mm x 20mm. 4 x Mounting Plates, Plate size-150mm x 115mm x 27mm approx.

Precision equipment.



Lot #131 - Makro Grip Vices & Clamping Plate (Lang)

Makro Grip Vices with quick release Clamping Plate . Also includes mounting plates.

Brand Lang. 4 x Vices, 1 x Plate. Plate size-580mm x 210mm x 20mm. 4 x Mounting Plates, Plate size-150mm x 115mm x 27mm approx.

Precision equipment.



Lot #132 - Makro Grip Vices & Clamping Plate (Lang)

Makro Grip Vices with quick release Clamping Plate . Also includes mounting plates.

Brand Lang. 4 x Vices, 1 x Plate. Plate size-580mm x 210mm x 20mm. 4 x Mounting Plates, Plate size-150mm x 115mm x 27mm approx.

Precision equipment.



Lot #133 - Makro Grip Vices & Clamping Plate (Lang)

Makro Grip Vices with quick release Clamping Plate . Also includes mounting plates.

Brand Lang. 4 x Vices, 1 x Plate. Plate size-580mm x 210mm x 20mm. 4 x Mounting Plates, Plate size-150mm x 115mm x 27mm approx.

Precision equipment.



Lot #134 - Makro Grip Vices & Clamping Plate (Lang)

Makro Grip Vices with quick release Clamping Plate . Also includes mounting plates.

Brand Lang. 4 x Vices, 1 x Plate. Plate size-580mm x 210mm x 20mm. 4 x Mounting Plates, Plate size-150mm x 115mm x 27mm approx.

Precision equipment.



Lot #135 - Makro Grip Vices & Clamping Plate (Lang)

Makro Grip Vices with quick release Clamping Plate . Also includes mounting plates.

Brand Lang. 4 x Vices, 1 x Plate. Plate size-580mm x 210mm x 20mm. 4 x Mounting Plates, Plate size-150mm x 115mm x 27mm approx.

Precision equipment.



Lot #136 - Makro Grip Vices & Clamping Plate (Lang)

Makro Grip Vices with quick release Clamping Plate . Also includes mounting plates.

Brand Lang. 4 x Vices, 1 x Plate. Plate size-580mm x 210mm x 20mm. 4 x Mounting Plates, Plate size-150mm x 115mm x 27mm approx.

Precision equipment.



Lot #137 - Makro Grip Vices & Clamping Plate (Lang)

Makro Grip Vices with quick release Clamping Plate . Also includes mounting plates.

Brand Lang. 4 x Vices, 1 x Plate. Plate size-580mm x 210mm x 20mm. 4 x Mounting Plates, Plate size-150mm x 115mm x 27mm approx.

Precision equipment.



Lot #138 - Tool Cabinet - 36 Draw

Tool Cabinet-36 Draw. Size-935mm x 590mm x 295mm.



Lot #139 - Pedestal Grinder & Linisher

Pedestal Grinder & Linisher. 8" Grinder Abbott Ashby, model- ATBG 600/8M. Linisher belt width-50mm. Single phase.



Lot #140 - Disc Sanding Machine

Disc Sanding Machine. Comes with some new discs. Disc size- 305mm, Total Height-1150mm, single phase, 0.75 hp, next Test 21/3/2021.



Lot #141 - Mobile CNC Tool Holder Trolley

Mobile CNC Tool Holder Trolley. Holds 64 Tools. Height- 1820mm.



Lot #142 - Work Bench with Bin Holders

Work Bench with Bin Holders. Dimensions- 1200mm x750mm 900mm (h) wooden top. Bin holder unclamps.



Lot #143 - Work Bench with Bin Holders

Work Bench with Bin Holders. Dimensions- 1200mm x750mm 900mm (h) wooden top. Bin holder unclamps.



Lot #144 - Work Bench with Bin Holders

Work Bench with Bin Holders. Dimensions- 1200mm x750mm 900mm (h) wooden top. Bin holder unclamps.



Lot #145 - Work Bench with Bin Holders

Work Bench with Bin Holders. Dimensions- 1200mm x750mm 900mm (h) wooden top. Bin holder unclamps.



Lot #146 - Work Bench with Bin Holders

Work Bench with Bin Holders. Dimensions- 1200mm x750mm 900mm (h) wooden top. Bin holder unclamps.



Lot #147 - Work Bench

Work Bench . Metal Frame. Dimensions- 900mm (h) wooden top.



Lot #148 - Mobile Work Tables x 3

Mobile Work Tables x 3.



Lot #149 - Automator Impact Stamping Machine

Automator Stamping Impact Machine.Model MB20. Used for marking products or riveting . Manual actuation of the impact marking mechanism by lever.

Adjustable Power-3,000 Kg (30 Kn). Max ground clearance-330mm, weight-33 kg, Shank dia/length-10-38mm, T-Cave dimension-10mm, Rack Stroke-60mm, Ram Anvil Stroke-18mm, Usable Stroke-42mm.



Lot #150 - Automator Impact Stamping Machine

Automator Stamping Impact Machine.Model MB20. Used for marking products or riveting . Manual actuation of the impact marking mechanism by lever.

Adjustable Power-3,000 Kg (30 Kn). Max ground clearance-330mm, weight-33 kg, Shank dia/length-10-38mm, T-Cave dimension-10mm, Rack Stroke-60mm, Ram Anvil Stroke-18mm, Usable Stroke-42mm.



Lot #151 - Automator Impact Stamping Machine

Automator Stamping Impact Machine.Model MB20. Used for marking products or riveting . Manual actuation of the impact marking mechanism by lever.

Adjustable Power-3,000 Kg (30 Kn). Max ground clearance-330mm, weight-33 kg, Shank dia/length-10-38mm, T-Cave dimension-10mm, Rack Stroke-60mm, Ram Anvil Stroke-18mm, Usable Stroke-42mm.



Lot #152 - Engineers Consumables x 42 Bins

42 x Engineers Consumables in plastic bins. Machine screws, washers, circlips, nuts bolts , tension springs etc .



Lot #153 - Assorted Hydraulics Large Quantity

Assorted Hydraulics Large Quantity. 2 x rikken Rams, 1 x Power Team Hand Pressure Pump, 1x Hydraulic Ram, Assorted Hydraulic Fittings.



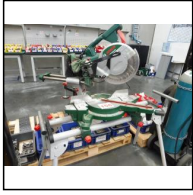
Lot #154 - Hand Bar Bender.

Hand Bar Bender.



Lot #155 - Gas Trolley with Hoses and Regulators

Gas Trolley with Hoses and Regulators. NOTE- Does not include bottles.



Lot #156 - Bosch Sliding Compound Mitre Saw

Bosch Sliding Compound Mitre Saw On Stand. Model-PCM 1800 SD-1800W. Next test-21/03/21.



Lot #157 - Machine Skates Complete Set

Machine Skates Complete Set. Model-SB 200, Capacity-20,000 kg.



Lot #158 - MTS Mig/Tig-Stick 250 Inverter Xcelarc Welder

MTS Mig/Tig-Stick 250 Inverter Xcelarc Welder. Single Phase. Comes with 2 sheilds. Note- Does not include bottle.



Lot #159 - Pallet of Safety Barriers

Pallet of Safety Barriers. 4 in Total .Brand Xpando.



Lot #160 - Pallet Of Assorted Pipe Fittings

Pallet Of Assorted Pipe Fittings.



Lot #161 - Extraction Fan

Extraction Fan. 3 phase. Inlet/ outlet 200mm dia approx.



Lot #162 - Centrifugal Fan

1 x Centrifugal Fan- flow 960 m3/hr..2800 rpm..inlet/out-115mm approx.



Lot #163 - Pallet Of New Strops

Pallet Of New Strops. 2 x 8 Ton..8 metre Blue, 2 x 8 Ton..8 metre Brown.



Lot #164 - Bin Of Heavy Lifting Chain etc

Bin Of Heavy Lifting Chain and other chains.



Lot #165 - Chain Blocks x 2

2 x Chain Blocks. 500 kg, tested tagged June 2021.



Lot #166 - Eye Bolts and Rated Shackles

Large Quantity of Eye Bolts and Rated Shackles. 8.5 ton shackles & smaller, 3200kg eye bolts and smaller.



Lot #167 - Bins Of Lifting Chains

2 x Bins Of Lifting Chains. 1 x G8 size 7mm length 2.27m 1500 kg, assorted others. Test date until June 2021.



Lot #168 - Assorted Heavy Clamps

Assorted (G) Heavy Clamps. 8 in Total. Throat size-400mm and smaller. 1 x Sliding Clamp.



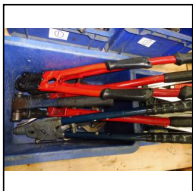
Lot #169 - Bin Of Rigid Pipe Dies etc

Bin Of Rigid Pipe Dies , handles, cutter.



Lot #170 - Bins of Pullers.

2 x Bins of Sykes Pickervant Pullers, assorted sizes.



Lot #171 - Bolt Cutters , Clamps etc .

Bolt Cutters , Irwin Clamps , Eclipse long Arm Riveter etc.



Lot #172 - Lever Block and Girder Trolleys

Lever Block and Girder Trolleys. 1 x lever block-800 kg JBS tested June 2021. 2 x Bever Girder Trolleys-500 kg, model GCT-DK.



Lot #173 - 2 x Chain Blocks - JBS

2 x Chain Blocks - JBS- 500 Kg. Tested June 2021.



Lot #174 - Assorted Diaphragm Pumps etc

Assorted Diaphragm Pumps etc. 1 x Shurflo-12v and 24vdc. 1 x Electrical Box. Assorted other gear in bin.



Lot #175 - Grundfos Sump Pumps x 2

Grundfos Sump Pumps x 2. Type uplift KP 250. Qmax-11.2 m3/hr, h max-7.5m. Single phase.



Lot #176 - Assorted Pumps & Electric Motor

Assorted Pumps & Electric Motor. 1x Lowara single phase, 1 x Grundfos single phase, 1 x electric motor monarch, 0.55 kw, 240/415v.



Lot #177 - Industrial Pump Grundfos

Industrial Pump Grundfos, Model CR 10, 3 PH, Type- Cr10-05-a-a-a-e-HQQE. Model-A96500983P10 738, 2.2KW. Hmax-51.1m..H-40.7..Q-10m3/hr.



Lot #178 - Pallet of Assorted Fastenings

Pallet of Assorted Fastenings. Stainless bolts, rivets, nuts bolts, screws , nails, etc.



Lot #179 - Pallet of Industrial Castors

Pallet of Industrial Castors. Brands Rex, Screws, Edwards.



Lot #180 - Pallet of Pipe Clamps etc

Pallet of Pipe Clamps , hose clamps, stainless and galv fittings.



Lot #181 - Tool Room Cabinet- 36 Draw

Tool Room Steel Cabinet- 36 Draw. Dimensions-970mm x 588mm x 340mm (d)



Lot #182 - Tool Room Cabinet- 36 Draw

Tool Room Steel Cabinet- 36 Draw. Dimensions-970mm x 588mm x 340mm (d).



Lot #183 - Tool Room Cabinet- 36 Draw

Tool Room Steel Cabinet- 36 Draw. Dimensions-970mm x 588mm x 340mm (d)



Lot #184 - Tool Room Cabinet- 36 Draw

Tool Room Steel Cabinet- 36 Draw. Dimensions-970mm x 588mm x 340mm (d)



Lot #185 - Pallet Of Galvanised Threaded Rod.

Pallet Of Galvanised Threaded Rod.Diameter-10mm approx. Lengths-2100mm and smaller.



Lot #186 - Pallet of Lamson Bins, Gloves

Pallet of Lamson Bins. Assorted Gloves- Sand blasting, welding etc.



Lot #187 - Mixed Pallet Of Electrical

Mixed Pallet Of Electrical.



Lot #188 - Pallet Of Drills- Sugino & Desoutter

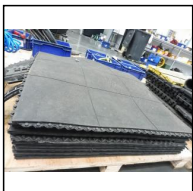
Pallet Of Drills- Sugino & Desoutter.

1 x Sugino Self feeder model-MSPU..RPM-1000/1200..STROKE MAX-99.9MM, Chucking Cap-13mm. 1 x Desoutter Air Drill Model-AFDE-62 2350 Rpm.



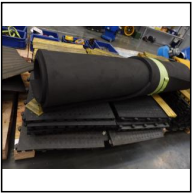
Lot #189 - Pallet of Lubrication Gear

Pallet of Lubrication Gear. Grease Guns, Grease, oil fillers, air hose, funnels etc.



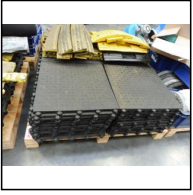
Lot #190 - Pallet Of Industrial Matting

Pallet Of Industrial Matting.



Lot #191 - Pallet Of Industrial Matting

Pallet Of Industrial Matting.



Lot #192 - Pallet Of Industrial Matting

Pallet Of Industrial Matting.



Lot #193 - Pallet Of Polishing Equipment

Pallet Of Polishing Equipment. Mops, PPS Industries Assorted Size Wheels, Polishing Soap. Big Lot.



Lot #194 - Pallet of Painting Equipment.

Pallet of Painting Equipment. A lot part used.



Lot #195 - Pallet of Hoses & Paint

Pallet of Hoses & New Paint.



Lot #196 - Coolant Pump and Tank

Coolant Pump and Tank. Pump single phase. Tank Dimensions-900mm x 700mm x 700mm. 1 x Part Drum of Vertex Solo Cut-3000.



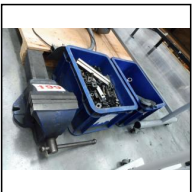
Lot #197 - Mobile White Board

Mobile White Board-1800mm x 1600mm.



Lot #198 - 2 x Industrial Fans

2 x Industrial Fans- 750mm-240v.



Lot #199 - Record Vice and Clamping Gear

Record Vice and Clamping Gear. Vice Jaw Width-155mm. Assorted Clamping and other equipment.



Lot #200 - 3 x Mobile Perspex Screens

3 x Mobile Perspex Screens. Size-1960mm x 1300mm.



Lot #201 - Mobile White Board

Mobile White Board- 1800mm x 1200mm.



Lot #202 - Mobile White Board

Mobile White Board-1800mm x 1200mm.



Lot #203 - Mobile White Board

Mobile White Board-1800mm x 1200mm.



Lot #204 - Mobile White Board

Mobile White Board-1800mm x 1200mm.



Lot #205 - Mobile White Board

Mobile White Board-1800mm x 1200mm.



Lot #206 - Mitsubishi Air Conditioning Unit

Mitsubishi Air Conditioning Unit. Model-MUZ-GA25A. Single Phase



Lot #207 - Extraction Unit With Speed Controller

Extraction Unit With Hi Vac Vagon Speed Controller. 3 phase, Dimensions-590mm x 550mm x 550mm fan size dia-315mm approx.



Lot #208 - Work Table

Work Table. Length-2000mm approx.



Lot #209 - Air Drill Desoutter

Air Drill Desoutter-model AFD31969, 6.5MM, 3500 Rpm. Comes on a stand.



Lot #210 - 3 x Mobile Trolleys

3 x Mobile Trolleys. Galvanised with parts bins. Dimensions-660mm x 430mm x 700mm.



Lot #211 - Hydraulic Scissor Lift Trolley

Hydraulic Scissor Lift Trolley. Capacity 250 kg.



Lot #212 - Kerrick Industrial Vacuum

Kerrick Industrial Vacuum. Comes on trolley. Single phase.



Lot #213 - Polisher On Stand

Polisher On Stand. Single Phase.



Lot #214 - Filcar Extraction Unit , Gas Trolley with Hoses and Regulators

Gas Trolley with Hoses . Comes With Filcar Dust Extraction Unit. 3 phase.



Lot #215 - Adjustable Barrier

Adjustable Barrier. Pando Brand.



Lot #216 - Pedestal Drill On Stand.

Pedestal Drill On Stand. Single Phase.



Lot #217 - 3 x Mobile Parts Cleaners

3 x Mobile stainless heated parts cleaner tanks been used for cleaning parts. Comes with some cleaning baskets . Single phase. Come on Steel Trolleys. Approx sizes-490mm x 350mm x 330mm.



Lot #218 - Stainless Parts Cleaner

Stainless Parts Cleaner. Single phase on Steel Trolley. Size-490mm x 350mm x 330mm.



Lot #219 - 2 x Stainless Parts Cleaner Tanks

2 x Stainless Parts Cleaner Tanks on small Mobile Trollies.



Lot #220 - 3 x Stainless Frame Mobile Trollies

3 x Stainless Frame Mobile Trollies. 2 x 500mm x 370mm x 800mm . 1 x 900mm x 600mm x 860mm.



Lot #221 - Mobile Parts Cleaner

Mobile Parts Cleaner. Filtermist. Air actuated.



Lot #222 - Starline Industrial Cleaner

Starline Industrial Cleaner. This has been used for parts cleaning. 3 phase-5 pin plug.



Lot #223 - Stainless Mobile Unit

Mobile Stainless Unit. Application Unknown. May be a stirrer. 3 phase.



Lot #224 - Mobile Heavy Duty Trolley

Mobile Heavy Duty Trolley. Application unknown. Total length-3800mm.



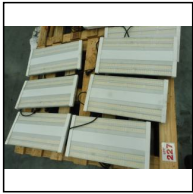
Lot #225 - Mobile Heavy Duty Trolley

Mobile Heavy Duty Trolley. Length-1500mm.



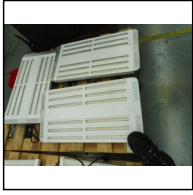
Lot #226 - Work Tables x 2

Work Tables x 2. Steel frame with wooden top. Dimensions-2070mm x 960mm x 1040mm (h).



Lot #227 - Industrial LED Lights x 7

7 x Industrial LED Lights . 153 W / 288 x 0.5 LED. Single phase.



Lot #228 - Industrial LED Lights x 3

3 x Industrial LED Lights .160w , 12 x (22 x 0.6) Single phase.



Lot #229 - Tilting Skip Bin

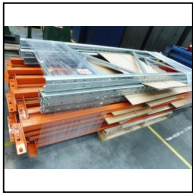
Tilting Skip Bin with Fork Lift pick up. Dimensions- 1120mm x 1060mm x 840mm(h).



Lot #230 - Quantity Of Pallet Racking

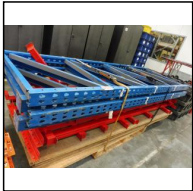
Quantity Of Pallet Racking.

5 x Uprights-2100mm , 42 x Beams-1800mm , 25 x Shelves . Inspection recommended.



Lot #231 - Quantity Of Pallet Racking

Quantity Of Pallet Racking. 3 x Uprights-2440mm, 25 x Beams- 2740mm approx.



Lot #232 - Quantity Of Pallet Racking

Quantity Of Pallet Racking. 4 x Uprights- 2900mm, 12 x Beams-2750mm approx , also comes with smaller cross supports-890mm, 6 x Heavy Duty Shelves-30mm thick.



Lot #233 - Drum Containment Bunds x 3

3 x Drum Containment Bunds - 1240mm x 1240mm. Comes with 2 x Drum Trolleys.



Lot #234 - Drager Respirator Mask

Drager Respirator Mask in Cabinet . 1 x steel filing cabinet.



Lot #235 - 2 x Pallets of Tote Bins

2 x Pallets of Tote Bins.

1 x pallet @ 60 Tote Bins

1 x pallet @ 54 Tote Bins

**Lot #236 - 2 x Steel Cabinets**

2 x Steel Cabinets . Size -1830mm x 400mm x 1000mm.

**Lot #237 - 2 x Steel Cabinets**

2 x Steel Cabinets . Size -1830mm x 400mm x 1000mm.

**Lot #238 - 2 x Steel Cabinets**

2 x Steel Cabinets . Size -1830mm x 400mm x 1000mm.

**Lot #239 - 2 x Steel Cabinets**

2 x Steel Cabinets . Size -1830mm x 400mm x 1000mm.

**Lot #240 - 2 x Steel Cabinets**

2 x Steel Cabinets . Size -1830mm x 400mm x 1000mm.

**Lot #241 - 3 x Industrial Polishing Machines**

3 x Industrial Polishing Machines. Brand Cannin. 3 phase- 4 pin 16a plug. Come with back stand idlers, tesioners, safety guards and some ducting.

**Lot #242 - Mobile Tool Room Cabinet**

Mobile Tool Room Cabinet. 7 Draw. Dimensions-1360mm(h) x 890mm x 650mm (d).

**Lot #243 - Mobile Tool Room Cabinet**

Mobile Tool Room Cabinet. 7 Draw. Dimensions-1360mm(h) x 890mm x 650mm (d).

**Lot #244 - Temperzone Air Conditioning Unit**

Temperzone Air Conditioning Unit. Model-OSA-87RKSH. Cooling Capacity-8.3 kw. Heating-7.8 kw. Power Supply-230-1-50.



Lot #245 - Tool Room Cabinet

Tool Room Cabinet with shelves and draws. Dimensions-1800mm(h) x 898mm x 450mm(d).



Lot #246 - Tool Room Cabinet

Tool Room Cabinet with shelves and draws. Dimensions-1800mm(h) x 898mm x 450mm(d).



Lot #247 - Tool Room Cabinet

Tool Room Cabinet with shelves and draws. Dimensions-1800mm(h) x 898mm x 450mm(d).



Lot #248 - Tool Room Cabinet

Tool Room Cabinet with shelves and draws. Dimensions-1800mm(h) x 898mm x 450mm(d).



Lot #249 - Tool Room Cabinet

Tool Room Cabinet with shelves and draws. Dimensions-1800mm(h) x 898mm x 450mm(d).



Lot #250 - Tool Room Cabinet

Tool Room Cabinet with shelves and draws. Dimensions-1800mm(h) x 898mm x 450mm(d).



Lot #251 - Tool Room Cabinet

Tool Room Cabinet with shelves and draws. Dimensions-1800mm(h) x 898mm x 450mm(d).



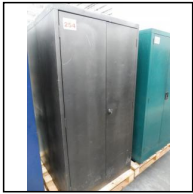
Lot #252 - Tool Room Cabinet

Tool Room Cabinet with shelves. Dimensions-1800mm(h) x 898mm x 450mm(d).



Lot #253 - 2 x Steel Cabinets

2 x Steel Cabinets . Size -1830mm x 400mm x 1000mm.

**Lot #254 - 2 x Steel Cabinets**

2 x Steel Cabinets . Size -1830mm x 400mm x 1000mm.

**Lot #255 - 2 x Steel Cabinets**

2 x Steel Cabinets . Size -1830mm x 400mm x 1000mm.

**Lot #256 - 2 x Steel Cabinets**

2 x Steel Cabinets . Size -1830mm x 400mm x 1000mm.

**Lot #257 - 2 x Steel Cabinets**

2 x Steel Cabinets . Size -1830mm x 400mm x 1000mm.

**Lot #258 - 2 x Steel Cabinets**

2 x Steel Cabinets . Size -1830mm x 400mm x 1000mm.

**Lot #259 - 2 x Steel Cabinets**

2 x Steel Cabinets . Size -1830mm x 400mm x 1000mm.

**Lot #260 - Steel Rack**

Steel Rack. Dimensions-4000mm(l) x 1160mm.

**Lot #261 - Shelf Unit**

Steel Shelf Unit- 2000mm(h) x 690mm x 560mm.

**Lot #262 - Steel Product Rack**

Steel Product Rack- 2570mm x 1970mm x 2255mm(h).



Lot #263 - BT - Electric Fork Lift and Charger

BT- Electric Fork Lift and Battery Charger. (PLEASE NOTE THE BATTERIES NEED REPLACING)
Model-LSV 1000/11, Hours- 2635, Lift Height-3350mm, Lifting- 1000 kg. Serviced 10/20 next service 10/21.



Lot #264 - Industrial Gas Radiant Factory Heater

Industrial Gas Radiant Factory Heater. Brand Ambirad. Model- ARE22UTNZ. Gas Type-Natural, Heat Input- 22kw, Category-12h(20), Supply Pressure-20mbar. Length-5260mm. Next Test-18/02/20



Lot #265 - Industrial Gas Radiant Factory Heater

Industrial Gas Radiant Factory Heater. Brand Ambirad. Model- ARE22UTNZ. Gas Type-Natural, Heat Input- 22kw, Category-12h(20), Supply Pressure-20mbar. Length-5260mm.



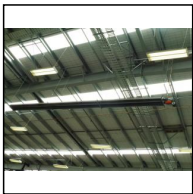
Lot #266 - 2 x Industrial Gas Radiant Factory Heaters

2 x Industrial Gas Radiant Factory Heaters. Brand Ambirad. Model- ARE22UTNZ. Gas Type-Natural, Heat Input- 22kw, Category-12h(20), Supply Pressure-20mbar. Length-5260mm. Next Test-18/02/20.



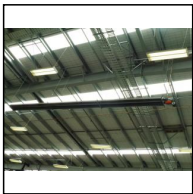
Lot #267 - Industrial Gas Radiant Factory Heater

Industrial Gas Radiant Factory Heater. NOTE: This will not be available until one week after the Tender Dispatch has been completed. Date to be confirmed.



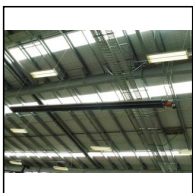
Lot #268 - Industrial Gas Radiant Factory Heater

Industrial Gas Radiant Factory Heater. NOTE: This will not be available until one week after the Tender Dispatch has been completed. Date to be confirmed.



Lot #269 - Industrial Gas Radiant Factory Heater

Industrial Gas Radiant Factory Heater. NOTE: This will not be available until one week after the Tender Dispatch has been completed. Date to be confirmed.



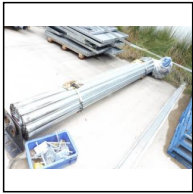
Lot #270 - Industrial Gas Radiant Factory Heater

Industrial Gas Radiant Factory Heater. NOTE: This will not be available until one week after the Tender Dispatch has been completed. Date to be confirmed.



Lot #271 - Quantity Of Pallet Racking

Quantity Of Pallet Racking. 6 x Uprights- 4880mm(h) x 900mm. 26 x Beams- 2740mm.



Lot #272 - Roller Door

Galvanised Roller Door. 3 phase. Comes with start/stop controller. Dimensions- 4500mm(h) x 3100mm wide.



Lot #273 - 43 x Steel Stacking Bins

43 x Steel Stacking Bins. 39 x 1000mm x 754mm x 690mm(h). 4 x Shallower. Inside dimensions-945mm x 665mm x 460mm(d)



Lot #274 - Mobile Steel Trolleys with Plastic Trays

11x Mobile Steel Trolleys with Plastic Trays. Each trolley holds 20 trays. Dimensions -1690mm x 800mm x 950mm. 1 x pallet plastic trays.



Lot #275 - Heavy Duty Die Storage Rack

Heavy Duty Die Storage Rack with 20 adjustable sliding shelves. Dimensions-5100mm x 1440mm(d) x 2090mm(h)



Lot #276 - Oil Dispensing Tanks x 3

Oil Dispensing Containment Vat. Comes complete with (3) mild steel 295 litre tanks and dispensers .

Specifications ; Vat dimensions 2660mm (l) x 790mm x 890mm (h)..The tanks have previously contained Hytec AW 100; Elfoha 546; slideway 68 oils .



Lot #277 - Component Cabinet x 18

Component Cabinets are wall mounted.Complete with Cap Screws; Grub Screws; Piercing Punches; Dowel Pins;CSK Bolts / Nuts; Washers.Other.
Overall Dimensions 1950mm (H) x 1200mm (W)



Lot #278 - Micrometers, Digital Vernier, External Thread Micrometer etc,

Assorted Micrometers Imperial / Metric (Mitutoyo,NSK, Somet).

Depth Gauge, Metric

Mitutoyo Digital Vernier

External Thread Micrometer 1-2 in (no probes).



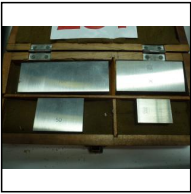
Lot #279 - Comaco Spring Testing Machine

Load 0 - 200 Lbs. Comes with weights.



Lot #280 - ITP Height Gauge

Comes with Mitutoyo DRO (missing DC 9V Power Lead) Serial No.2068.



Lot #281 - Kalmaster Vernier Calibration Block

Serial No. 2071 . Setting Slip Blocks 25, 50, 75, 100mm.



Lot #282 - Mitutoyo Gauge Block Set

Serial No. 2071 . Setting Slip Blocks 25, 50, 75, 100mm.



Lot #283 - Surface Checking Instrument

Federal Pocket Surf 111 (Condition Unknown)



Lot #284 - Spring Loaded Micrometer

0 - 25mm ; Resolution 1 Micron.



Lot #285 - Standard Lengths

1 Set 27mm - 122mm , Increments 5mm

1 Set 10mm - 123mm



Lot #286 - Instrument Clamp Standards x 6

Instrument Clamp Stands x 6.



Lot #287 - Quantity of Maxi / Lamson Bins

22 x size 30

22 x size 4



Lot #288 - 8 x Bins of Ring Gauges

UNF , WHIT, UN, ACME, METRIC, BSPE.



Lot #289 - 8 x Bins of Thread Gauges Go/ No Go

Thread Gauges, Go No Go, x 8 Bins

Imperial.



Lot #290 - 10 x Bins of Plug Gauges

Plug Gauges, Go No Go, 10 x Bins, Metric.



Lot #291 - 2 x Bins of Adjustable Snap Gauges

Adjustable Snap Gauges x 2 Bins. Imperial.



Lot #292 - Mitutoyo Borematic Digital Bore Gauges x 3

Mitutoyo Borematic Digital Bore Gauges x 3. These gauges are going, one needs a battery. Out of Calibration.

1 with 6 - 8mm Head, 1 with 10 -12mm Head, 1 x etc.

Assorted spare heads and calibration rings. 30-40mm(new) ; 20-25mm; 25-30mm; 16-20mm; 8-10mm; 6-8mm;30-40mm

Ring Gauges 40.003mm;30.001mm; 20.000mm;16.002mm;10.004mm; 8.006mm.



Lot #294 - Goldair Industrial Pedestal Fans x 2

Goldair Industrial Pedestal Fans x 2

75cm , 240 volt .



Lot #295 - 200 Litre Drum Vertex Hydraulic Fluid (New)

200 litre Drum Vertex Hydraulic Fluid (new)

Vertex Hytec FR HFC46, Synthetic Water Polymer, Fire Resistant Hydraulic Fluid.



Lot #296 - 2 x Banks Of 12 Lockers

2 x Banks of Lockers , 12 x Lockers with keys.



Lot #297 - 2 x Banks Of 12 Lockers

2 x Banks of 12 Lockers with keys.



Lot #298 - 2 x Banks Of 12 Lockers

2 x Banks of 12 Lockers with keys.



Lot #299 - 1 x Bank Of 6 Lockers

1x Bank of 6 Lockers with keys.



Lot #300 - Pallet Racking - Victor

6 x Uprights 2400mm (H) x 400mm (W)

6 x Beams 1810mm x 115mm

2 x Beams 1810mm x 80mm recessed

4 x Beams 2750mm x 115mm



Lot #301 - Pallet Rack

Pallet Rack, 3 x Shelves

Overall Dimensions 2170mm (W) x 2100mm(H) x 900mm(D)



Lot #302 - Unistrut Cable Trays / 41mm Struts

2 x pallets of Cable Tray, 2980mm (L) in widths of 470mm, 300mm, 150mm, 100mm.

Pallet Lot of Unistrut 41mm sq section Struts x various Lengths.



Lot #303 - Aluminium Picking Ladder Platform

Bailey Picking Ladder

2400mm to Platform

(See photos for other details.)

Overall Dimensions 3150mm(H) x 1850mm x 880mm



Lot #304 - Aluminium Step Ladder

Ullrich Aluminium Step Ladder



Lot #305 - Bailey Extension Ladder

Bailey Extension Ladder

Heavy Duty, Professional Contractor, 150kg.



Lot #306 - Blower Fans x 2

Blower Fans x 2

1 @ 600 mm dia with 2.2kw, 3 phase electric motor.

1 @ 350mm dia with 2.2 kw, 3 phase electric motor



Lot #307 - Electric Chain Hoist - 500 kg

500kg Electric Chain Hoist.

Brand : Columbus McKinnion

Power Supply 380/ 3/ 50

Speed FPM 13.8; 4 MPM

Comes with Gantry Traveller and Up/ Down Pendant Controller



Lot #308 - Canteen Chairs x 24

Canteen Chairs x 24

21 x Canteen Chairs x white

3 x Canteen Chairs x vanished

Tops are moulded ply with chrome plated legs.



Lot #309 - Square Mouthed Shovels x 5

Square Mouth Shovels x 5

Please note: 2 x shovels have holes drilled to release liquids



Lot #310 - Pump and Dosing Station

Pump and Dosing Station

Includes: 2 x DAB Circulating Pumps, model K66/ 100T;

2 x Dosing Pumps, Grunfos/ Milton Roy;

Hofman Tower Controller OTH-3;

Inline Filter:

Chemicals NOT included.



Lot #311 - Cooling Tower

Cooling Tower, Liang Chi

Make: Liang Chi;

Model 15

Cooling Capacity 58.5 KCal/ Hr

Water Flow 195 M2/Min:

Air Vol 135 M3/ Min.



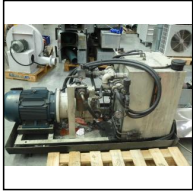
Lot #312 - Marantz Audiophile Stereo Receiver - SR4320

The Marantz SR-4320 Stereo Receiver is a full-featured stereo control centre that combines exceptional sound quality with a host of performance and convenience features including remote control operation. The SR-4320 provides seven audio inputs including phono to accommodate a variety of music sources, and features a fully discrete amplifier section for clear and powerful sonic performance. This versatile unit can also function in high quality multi-zone installations.

Key Feature:

- 80W x 2 (RMS)
- 7 audio inputs, incl. phono
- Discrete amplifier section
- Heavy-duty power amplifier
- Video output for VCR and Monitor Out
- Video inputs for DSS,VCR and DVD
- Speaker A and B outputs - A, B,A+B, OFF
- Preamp outputs / Main-In inputs

- Full function remote control
- D-BUS connections with discrete IR command
- Multi-room flexibility
- Connect to an external power amplifier for greater power output, use as multi-room amp
- Full remote operation. Link to other Marantz components (SN:SR4320) (178443-29)



Lot #313 - Hydraulic Power Pack , Heavy Duty .

Hydraulic Power Pack, Heavy Duty.

Complete with 11 KW , 1470 rpm, 415 V Electric Motor; Water Cooled Heat Exchanger; Uses Vertex Hytec Hydraulic Oil. (See Lot 295) .

Overall Dimensions : 1630mm L x 1000 W x 975mm H.



Lot #314 - Heavy Duty Motor Gearbox

Flender Heavy Duty Motor Gearbox.

Complete with 4 kw Electric Motor ;

N2 = 45 u / min

I = 31.80



Lot #315 - Simons Steam Generator

Simons Steam Generator

Boiler No SB3 S/ 125

Power Input 30KW

42 Amps/ PH; 415V

Date of Manufacture 19. 05. 06

Test Pressure 1125 Kpa

Design Pressure 750 Kpa

Boiler Serial No.58949

Date of Shell Cert 27. 07. 05



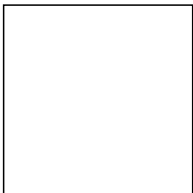
Lot #316 - 2 x Energotech Heaters - 3000w

2 x Energotech Heaters-3000w.

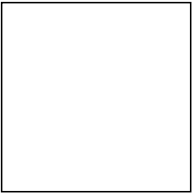


Lot #317 - 5 x Bins Of Go/ No Go Gauges etc

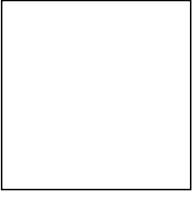
5 x Bins Of Go/ No Go Gauges , thread , ring , etc.



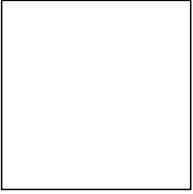
Lot #318 - Strapping Machines x 2



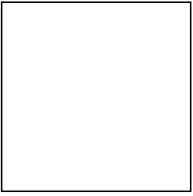
Lot #319 - 1 x Pallet of blue bins



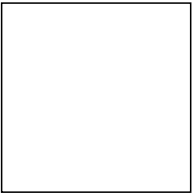
Lot #320 - Drum containment bins x 2



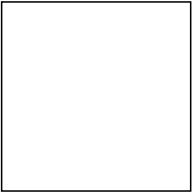
Lot #321 - BeCu Die Blocks - 2680kg @ \$5/ kg



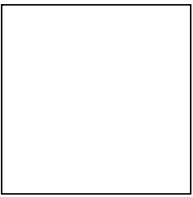
Lot #322 - Steel stacking bins



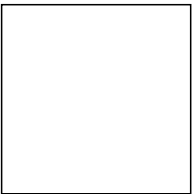
Lot #323 - Steel stacking bins



Lot #324 - Steel stacking bins



Lot #325 - Steel stacking bins



Lot #326 - Steel stacking bins



Conditions of Sale

As is where is

1.0 The purchase of the goods shall be on an "as is where is" basis.

Inspection

2.0 It is deemed that the Purchaser or their agent have made the appropriate inspection of the goods and that the purchase is based on knowledge of the condition of the goods.

Warranty

3.0 No warranties, expressed or implied are given, or representations made, in respect of the plant, vehicles or equipment offered; whether as to condition, title, the suitability of such items for any particular purpose. Neither the Vendor nor Industrial Resale accept any responsibility for the accuracy or completeness of any statements in the documents.

3.1 No warranties expressed or implied are given to the effect that the items comply with the requirements of any Statute, Regulation, Order or Bylaw. It shall be the sole responsibility of the Purchaser to ensure that the requirements of all Statutes, Regulations or Bylaws are complied with in relation to the machinery, vehicles or electrical equipment purchased.

Payment

4.0 Payment: Bank-to-bank transfer only. Please note that company cheques are not accepted

4.1 The purchaser or their agent must produce a copy of the paid GST invoice receipt to the onsite sales supervisor on the prescribed uplifting days for the items to be released.

Title

5.0 Title to the goods shall transfer to the successful Purchaser upon full payment of the purchase price.

Pickup

6.0 Pickup shall be ex the location as specified.

6.1 The purchaser shall be entitled to take delivery of the item/s only on payment of the total purchase price and only on the prescribed uplifting days.

6.2 The item/s shall be at the sole risk of the purchaser from time of payment.

6.3 The purchaser shall be responsible for all costs related to the removal of the item/s, including electrical and other service disconnection, decommissioning, loading, packaging, storage and security commencing immediately on purchase of the items.

6.4 The Purchaser shall be responsible for all costs related to the making good of the building, floor, roof, walls, property and services, where damage to, change to, is a result of removal of an item of plant or equipment.

6.5 Industrial Resale will require evidence of the Purchaser or their agents capacity to dismantle /remove major plant items in a safe manner, prior to any work being carried out on the Vendors site. Appropriate Public Liability Insurance will also be required.

Occupational Safety and Health

7.0 The purchaser and their representatives, must at all times while on the Vendor's site, comply with the relevant Health and Safety Acts and all other relevant legislation.

Liability

8.0 Risk of loss or damage, whether to the goods or persons or property, shall pass to the purchaser upon the transfer of title.

Law

9.0 The sales of goods shall be governed by the law of the country where the goods are located.

Default

10.0 If the purchaser fails to pay the full price within 7 days from the date of notification that it's Tender was successful, the Vendor may in its sole discretion cancel the sale. Such cancellation is without prejudice to any other remedies available to the Vendor under contract or law for damages or otherwise.

10.1 If the Purchaser pays for the item/s but fails to take delivery within the prescribed uplifting days, the Vendor may, after giving notice to do so, sell or dispose of item/s and apply any proceeds arising there from as follows: (i) in reimbursement of all costs of the selling or otherwise disposing of the item/s (ii) in payment for any residue, after reimbursement of (i), to the purchaser of the items.

10.2 In addition to all the other remedies, the Tender manager reserves the right to refuse to consider any future Tenders from any purchaser who has defaulted under clause 10.0 + 10.1

Sale Management

11.0 The sale is being managed by Industrial Resale, on behalf of the Vendor. Industrial Resale is not authorized to express opinions, to offer advice or make representations to purchasers or to the public concerning the items which are the subject of this sale, and does not offer any warranties, representations or undertakings to any such parties.