



CHEVPAC MACHINERY (NZ) LIMITED CATALOGUE

For any queries phone:

Bill 027 778 8552

Rex 021 0810 0774

Viewing Times

TUESDAY 12th August 9.00am to 3.00pm, WEDNESDAY 13th August 9.00am to 3.00pm,
THURSDAY 14th August - 9.00am to 3.00pm

Viewing Location

30 Saleyards Road, Otahuhu, Auckland . Please Note: The Tender Viewing and Parking is at the Rear of the Chevpac Building.



Lot #1 - PRESS BRAKE: BENZEL, 2 AXIS, MODEL WC67E - 100T x 3200mm, ESTUN 200P, YEAR 2021 (NEW SHOP SOILED)

SPECIFICATIONS - Pressing Force 100 Ton

Bending Length 3200 mm

Stroke 100 mm

Max Daylight 360 mm

Distance Between Columns 2650 mm

Backgauge 550 mm

Axis Configuration X,Y

Throat Depth 250 mm

Approach Speed 50 mm/sec

Pressing Speed 7.5 mm/sec

Return Speed 45 mm/sec

Motor Power 6.5 (kW)

Controller Type Estun 200P

Light Guard Type AKAS

Weight Nett / Gross 5950 kg

Volume 13,300 cm

FEATURES - Hydraulic / mechanical ram with synchronised positive stop design. The ram stroke is controlled by precision mechanical nut depth stops, built into each cylinder.

Electronically controlled by Estun E200P programmable digital controller assuring accurate repeatability.

Hardened ballscrew on back gauge with manual crowning arrangement.

Moveable front supports on guide rails for easy adjustments of sheet widths.

Hydraulic MPa pressure gauge mounted on right side of support frame with quick adjusting pressure control knob allowing operator to accurately set the pressure required for different material thickness, incorporated with hydraulic overload protection

Enclosed rear gate with micro safety switches complete with sliding rear door for easy access

Conveniently mounted control box on pendant for quick swivel and adjustments.

Welded steel fabricated synchronised torsion bar horizontally supporting main bending beam to provide consistent

parallelism that also can be adjusted for taper correction.



Lot #2 - CNC LATHE: SMTCL, MODEL CAK61135GI, 610 X 1270mm WITH SIEMENS 828D CONTROLLER , YEAR 2015 (NEW SHOP SOILED)

SPECIFICATIONS - Swing Over Bed 610 mm Dia

Swing Over X- slide 370 mm Dia

Distance Between Centres 1270 mm

Speeds Automatic 3 Grades Stepless : 22-220; 71-710; 215-2200

Spindle Bore 70 mm Dia

Spindle Nose A8

Z Travel 1270 mm Max Turning Length

X Travel 305 mm

Tailstock Taper MT5

Tool Post Turret Style: Horizontal 6 Position

Voltage 415 V

Motor Power 7.5 kW

Weight Nett/Gross 2700/3500 kg

Volumn Packed 19 m3

Overall Dimensions Packing 4050 x 2178 x 2149 mm

FEATURES - High precision spindle bearings

Hardened bedways

6 Station turret style toolholder with 3 boring bar holders

250mm 3 jaw chuck

Automatic lubrication system with auto-stop when dry

Fixed & Travelling steadies with adjustable roller fingers

Worklight above work area

Siemens 828D Basic controller

Manual tailstock



Lot #3 - CNC LATHE: GLOBAL, MODEL GL-400R , 400 X 835mm WITH SIEMENS 808D CONTROLLER, YEAR 2018 (NEW SHOP SOILED)

SPECIFICATIONS - Swing Over Bed 400mm with 190mm3 jaw chuck

Bed Width 320mm

Swing Over X -slide 300 mm

Distance Between Centres 835 mm

Speed Range 50 - 3500 rpm

Spindle Bore 54 mm

Spindle Nose A2-5

Bar Capacity 52 mm

Z Travel 815 mm

X Travel 300 mm

Tailstock Taper MT4

Turret Stations 6

Tool Size 20 x 20mm

Controller Siemens 808D

Rapid Feed Rate 8 m/min

Voltage 415 v

Motor Power 5.5 kW

Weight Nett / Gross 1550/1600 kg

Volume 2.1666 m3

Dimensions L x H x W 2120 x 1400 x 730 mm

FEATURES - Sturdy, well constructed machine

High precision spindle bearings

Hardened bedways

6 Station turret style toolholder

Fixed & travelling steadies with adjustable roller fingers

Worklight above working area

Siemens 808D Basic controller

Locking systems on all opening doors for safety

Rapid Feed



Lot #4 - HYDRAULIC GUILLOTINE, BENZEL, MODEL HSH-4 X 4000 WITH ESTUN 21S CONTROLLER. YEAR NOV 2021 (NEW, SHOP SOILED)

Hydraulic Guillotine, Benzel, Model HSH-4 X 4000

SPECIFICATIONS - Shearing Capacity 4 mm Mild Steel, 2 mm Stainless

Blade Length 4000 mm

Rake Angle Variable No

Min Rake Angle 1.5 degree

Hold Downs Clamps 10

Holding Force 55 psi

Controller (Estun) E21S plus Invertor

Backgauge (mm) 20 mm-900mm

Motor Power 7.5 Kw, 380 v, 3 Phase

Length 4130 mm

Width 2030 mm

Height 1600 mm

Weight Nett/Gross 5200 kg

Volume 19,200 cm

FEATURES - Estun E21S controller, mounted on swivel pendant arm plus Invertor

Transfer balls inserted into work table allowing material to be easily moved.

Front support arms with rollers, flip over stops and mitre gauge.

Rapid blade adjustment.

Hydraulic hold downs with nylon pads.

Side and front protection guards, photo-electric sensors at the back.

Hardened ballscrew type swing away backgauge.

One shot lubrication pump and reservoir for slideway protection.

Blades manufactured from 9CrSi suitable for cutting stainless steel.

Roving foot pedal control.

Laser light shadow alignment device



Lot #5 - HYDRAULIC GUILLOTINE, BENZEL, MODEL HSH 6 X 3200 WITH ESTUN E21S CONTROLLER, YEAR 2021(NEW SHOP SOILED)

Hydraulic Guillotine, Benzel, Model HSH 6 X 3200

SPECIFICATIONS - Shearing Capacity 6 mm Mild Steel

Blade Length 3200 mm

Hold Downs 15

Holding Force 40 bar

Controller Estun, E21S

Backgauge 990 mm

Motor Power 7.5 Kw

Length 3840 mm

Width 2320 mm

Height 1620 mm

Weight Nett/Gross 6500 kg

Volume 15.96 cm

Packing Size 3800 x 2100 x 2000 mm L x W x H

FEATURES - This Benzel Hydraulic Guillotine is a 6.0 mm x 3200 mm swing beam type.

Heavy construction with motorised back gauge motor, driven with an Invertor.

Maximum back gauge travel is 900 mm and comes with ball screw for total accuracy.

Fitted with Estun E21S controller for effective cutting control.

Fitted with photo sensor protection at the rear of this machine.



Lot #6 - SLIP ROLLS, GLOBAL, 2550 mm X 6.0 mm, POWER 5.5 KW, 3 PHASE, YEAR 2023 (NEW SHOP SOILED)

Slip Rolls, Global, 2550 mm x 6.0 mm, Power 5.5 kw, 3 Phase.

SPECIFICATIONS - Description Slip Rolls Initial Pinch

Capacity Mild Steel 6 mm

Top Roll Diameter 190 mm

Wire Grooves Yes

Min Forming Radius 400 mm

Material Length 2550 mm

Roll Speed 16 rpm

Motor 5.5 kw

Weight Nett/Gross 2850 kg

Volume 6.6367 cm

Packing 3980 x 1150 x 1450

FEATURES - Initial pinch rolls with pre-bending.

Motorised up and down rear curving roll enables quick and easy pre bending.

Digital readout display on rear curving roll position.

Mobile foot pedal control with digital readout display.

Two rolls are powered by reduction gearbox drive system.

Swing out top roller enables cone or cylinder to be removed.

Safety wire interlock system with emergency shut-off.

Rolls include wiring grooves.

Includes a conical bending guide roller.



Lot #7 - PRESS BRAKE, BENZEL, 2 AXIS , MODEL WC67E, 30TON X 1600mm WITH ESTUN 200P CONTROLLER, YEAR 2018 (USED FROM DECEASED ESTATE)

PRESS BRAKE, BENZEL, (Used from Deceased Estate) 2 AXIS, MODEL WC67E, 30 TON X 1600mm WITH ESTUN 200P CONTROLLER

SPECIFICATIONS - Pressing Force 30Ton

Bending length 1600 mm

Stroke 100 mm

Max Day Light 360 mm

Distance Between Columns

Throat Depth 250 mm

Approach Speed 50 mm/sec

Pressing Speed 7.5 mm/sec

Return Speed 45 mm/sec

Controller Type Estun 200P

Light Guard Type Lintech

Motor Power 5.5 kw

Weight Nett/Gross 2900/3000 kg

Volume 3.0240cm

Packing Size 2400 x 600 x2100 mm L x W x H

FEATURES - Hydraulic / Mechanical ram synchronised positive stop design, ram stroke controlled by precision mechanical nut depth

stops built into each cylinder.

Electronically controlled by Estun E200 programmable digital controller assuring accurate repeatability.

Hardened ball screw on back gauge with manual crowning arrangement.

Front support can be easily adjusted and moved depending on the sheet width.

Hydraulic MPa pressure gauge mounted on right side of support frame with quick adjusting pressure control knob

allowing operator to accurately set the pressure required for different material thickness incorporated with hydraulic

overload protection.

Enclosed rear gate with micro safety switches complete with sliding rear door for easy access.

Conveniently mounted control box on pendant for quick swivel and adjustments.

Welded steel fabricated synchronised torsion bar horizontally supporting main bending beam to provide consistent

parallelism that also can be adjusted for taper correction.



Lot #8 - RADIAL ARM DRILL, MODEL Z3050 X 16/1, 50MM CAPACITY, YEAR 2013, (NEW SHOP SOILED)

Radial Arm Drill, Model Z3050 x 16/1

SPECIFICATIONS - Drilling Capacity 50 mm

Spindle Taper MT5

Spindle Travel 315 mm

No. of Speeds 16

Speed Range 25 - 2000 rpm

Column Diameter 350 mm

Max Nose to Column 1600 mm

Max Base to Spindle 1220 mm

Weight 3500 kg

Voltage 415 v

Motor Power 4 kw

FEATURES - Excellent quality Radial Drill, widely used for drilling, enlarging and reaming holes facing spots & tapping.

All gears, spline shafts and guideways are hardened and ground for extra strength.

Oil bath lubricated gear box.

Hydraulically operated feed & spindle drives.

Fitted with autofeed and precision depth stops for accuracy.

Sensitive & reliable speed & feed change.

Motorised drilling arm for powered rise and fall.

Complete with coolant pump, worklight & heavy duty slotted worktable.



Lot #9 - WELDING GENERATOR, SENCI, MODEL WD600 WITH KUBOTA V3300-T DIESEL ENGINE (NEW, SLIGHT DAMAGE TO TOP PANEL, SEE PHOTOS)

SPECIFICATIONS - Model WD600

Rated kW Prime 36 kw - Standby 39.6 kw

Current Range 30 - 350 Amp x 2

Alternator Wattek

Engine Type Kubota V3300-T Diesel

Max RPM 1,500

Frequency 50Hz

Duty Cycle Stick 100% Tig 60%

No Load Voltage- Stick 76 V

No Load Voltage- Mig 76 V

Phase Tri Phase -AC 400v / 25kw

Warning Gauges Temperature, Oil Pressure, Charging

Welding Outlets EW35-50 Female x 2

Power Outlets 230v x 2 / 400 x 1

Fuel Tank Capacity 80 Litre (7.4 hrs running)

Voltage Regulator AVR Brushless Ecitation

Start Type Electric

Weight Nett/Gross 850/860 kg

Volume 1.3776 m3

Dimensions 1600 x 820 x 1050 mm L x W x H

FEATURES - The WD-600 DC power welder generator workstation is fitted with the reliable Kubota diesel engine for maximum

performance and reliability.

Fitted with AVR brushless excitation voltage regulator for constant voltage delivery.

This Tri-Phase machine is fitted with EW35-50 large size welding pin outlets x 2, Power outlets 230v x 2, Three phase

400v outlet x 1

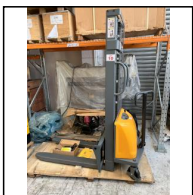
Welding current can be adjusted by remote control which is supplied with this machine.

The flux core semi-automatic can be realised by matching Millar, Lincoln, or Senci wire feeder.

The wire feeding speed and welding voltage can be adjusted on the SC100 wire feeder.

The welding current can be preset and adjusted in MMA gear.

Dual handles can be output independently or in parallel which can achieve greater current and power output.



Lot #10 - PALLET STACKER, 3 METRE LIFT, 1500KG, ELECTRIC 12V (NEW)

Pallet Stacker, 3 Metre lift height, 1500 kg, Electric 12V

SPECIFICATIONS Model CDD15B-E

Max Height 3,000 mm

Mast Height 2145 mm

Min Height 90.0 mm

Fork Length 1070 mm

Fork Adjustable Range 300-930 mm

Length O/A 1745 mm

Body Width O/A 960 mm

Wheel size Front 180 x 50 mm

Load Centre 400 mm

Service Weight 420 Kg

Loaded Capacity 1500 Kg

Lifting Speed Loaded/ Unloaded 0.05/0.8 m/s

Braking Mechanical

Lifting Motor 1.5 kw

Weight Without Battery 385 Kg

Battery Weight 45 Kg

Charger 12v 15 amp

Battery 12v /120ah (included)

Weight Nett/ Gross 415 kg

Volume 3.6682 cm

Packing Size 2145 x 980 x 1745 mm L x W x H

FEATURES - This powerful electric pallet stacker comes complete with 120 A/h battery and charger.

Complete design with strong steel construction

Smooth control when lifting under load and walk behind.

Hydraulic pump is from Germany.

Drive motor is brushless type.

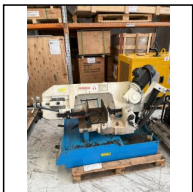
Braking system by mechanical.

Explosion proof valve is fitted to cylinder in case of failure.

Steering mechanism is driven by chains and requires small steering force.

Fitted with foot brake for added safety.

This electric stacker conforms to iso3691-1, EN1175-1, EN16307-1



Lot #11 - BANDSAW, HEAVY DUTY SEMI-AUTOMATIC DUAL MITRE SAW, TANNER, MODEL G5027, YEAR 2018, (USED, VICE IS NOT CLAMPING, NEEDS ATTENTION)

Bandsaw, Heavy Duty Semi-Automatic Dual Mitre Saw, Tanner, Model G5027, Year 2018, (Used, Vice is not clamping, needs attention)

SPECIFICATIONS - Capacity Round 90* 270mm

Capacity Rectangular 90* 350 x 240 mm

Capacity Round 45* 230 mm

Capacity Rectangular 45* 230 x 150 mm

Blade Speeds 2

Blade Speeds 36 & 72 m/min

Blade Size 2,950 x 27 mm L x H

Motor 1.875 kW

Voltage 415 V

Weight 446 / 551 kg

Volume 2.3937 m³

Packing Size 1770 x 980 x 1380 mm L x W x H



Lot #12 - PETROL WELDER/ GENERATOR, HWA S DAN, MODEL HAXQ1-190D-A (NEW OUT OF BOX)

SPECIFICATIONS - Rated Voltage 230V

Rated Current 3.7 kW

Frequency 50Hz

Welding Current 50-190 A

Welding Rods 1.6 - 5.0 mm

Engine Output 223 cc

Start Type Electric

Outlets 230 x 1 (V x no)

Fuel Tank 15 Ltr

Run Time 8 hrs

FEATURES - DC Welding and AC Generator Output

Air Cooled.

AVR Regulator for Constant Voltage.

Fitted with EW35-50 Welding Outlet



Lot #14 - WELDER GENERATOR , RATED OUTPUT 7.5 kW MODEL JDW8000 WITH DIESEL ENGINE (USED, FAULTY, NEEDS REPAIR AND PARTS)

This machine is a non runner and needs parts to repair.

SPECIFICATIONS - Rated Voltage 230 V

Frequency 50 Hz

Rated Watts 6.5 kW

Output 7.5 kW

Start Type Electric

Tank Capacity 16 Ltr

Approx Run Time 6.5 hours

Weight 130 kg



Lot #15 - CUT-OFF SAW, GLOBAL MODEL CS-315 (used)

SPECIFICATIONS - Blade Size - 315mm

Bore - 40mm

Cap Round 90 - 70mm

Cap Round 45 - 70mm

Cap Rectangular 90 - 70 x 130mm

Cap Rectangular 45 - 70 x 90mm

Speeds - 2

Speeds - 19/38

Voltage - 415v

Motor Power - 1.5kW



Lot #16 - GEARED HEAD MILL/DRILL, GLOBAL MODEL GL45

SPECIFICATIONS - Table Size 800 x 240 mm

Drilling Capacity 40 mm

Longitudinal Travel 560 mm

Cross Travel 230 mm

Swing 430 mm

Max Nose to Tail 470 mm

Spinder Taper MT4

Quill Travel 120 mm

Column Dovetail

Speeds 6

Speed Range 75 - 1600 rpm

Table Slot 14 mm

Voltage 240 v

Motor Power 1.1 kW



Lot #17 - WOODWORKING JOINTER/PLANER LAZZARI (ITALY) MODEL LFS35 (WORKING BUT BED SLIGHTLY OUT OF LEVEL)

SPECIFICATIONS - Function A Jointer 350 mm

Function B Planer H 230 mm x W 350 mm

Table Size 350 x 1485 mm

Motors 3 HP 1 Phase

Weight 245 kg



Lot #18 - EDGE SANDER MODEL BS6 X 100-1 BELT: 152 X 2515

SPECIFICATIONS - Belt Size 152 x2515 mm

Front Table Size 300 x 840 mm

End Table Size 300 x 250 mm

Motor 2200 w 1 Phase

Dust Outlet 4"

Contact Wheel OD 178 x 150 mm

Weight 140 kg



Lot #19 - MIG WELDER, FY-TECH M-PRO MODEL 4250/2E, 250A, 1 PHASE (NEW DEMO)

SPECIFICATIONS - Weld Range 250 Amp

Rated Output 17.2 v

Input Voltage 29 Amp

Power Supply 230 v 50hz

Weight 98 kg

Volume 0.2875 cm

FEATURES - The FY Series Mig semi automatic gas shielded welding machines are suitable for all position welding and for high speed

welding of sheetmetal and medium plates.

Mainly used for welding ferrous metals such as low carbon steels, high strength low alloy metals, stainless and iron.

Comes with Cable and Hand Piece



Lot #20 - MIG WELDER, FY- TECH M PRO, MODEL 4250/2E 250A, 1 PHASE (NEW DEMO)

SEE LOT 19 FOR SPECIFICATIONS

Comes with Cable and Handpiece.



Lot #21 - MIG WELDER, FY-TECH M PRO, 4250/2E, 250A, 1 PHASE (NEW DEMO)

SEE LOT 19 FOR SPECIFICATIONS

Comes with Cable and Hand Piece.



Lot #22 - 50 TON HYDRAULIC H FRAME PRESS (NEW REPAIRED)

This hydraulic press is fitted with side mounted pump and overhead pressure gauge. Adjustable table height using side mounted winch.

(Pressure gauge to be fitted by Chevpac)



Lot #23 - TOOL CABINET, TOPTOOLS, FOR PRESS BRAKE TOOLING. (NEW)

FEATURES - Heavy duty runners on drawer

Length 650 mm

Width 910 mm

Height 1230 mm



Lot #24 - TOOL CABINET, TOPTOOLS, FOR PRESS BRAKE TOOLING x 2 (1 HAS SLIGHT PANEL DAMAGE ONTOP)

FEATURES - This cabinet has heavy duty runners on drawers.

Length 650 mm

Width 910 mm

Height 1230 mm



Lot #25 - YARD DUAL AXLE TRAILER, 2500 X1200MM X 6000KG WITH SOLID TYRES (NEW)

SPECIFICATIONS - Model DT 60

O/A Size 4000 x 1200 mm

Wheel Size 16 x 6 x 10.5" Solid tyres

Axles Dual

Carrying Capacity 6000 kg

Construction Steel

Ground Clearance 200 mm

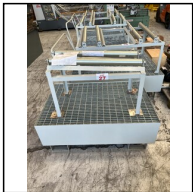
Weight 450 kg

Volume 3.3800 cm



Lot #26 - DRUM SPILL CONTAINMENT TROLLEY FOR 205 LTR DRUMS (NEW)

FEATURES - Designed for 2 x 205 ltr drums. On heavy duty wheels.



Lot #27 - DRUM SPILL CONTAINMENT BASE WITH DRUM DISPENSER STAND (NEW)

FEATURES - Containment base has forklift pockets. Drum dispenser stand to suit 1 x 205 Ltr drum.



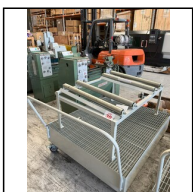
Lot #28 - DRUM SPILL CONTAINMENT BASE WITH DRUM DISPENSER STAND (NEW)

FEATURES - Containment base has forklift pockets. Drum dispenser to suit 2 x 205 Ltr drums



Lot #29 - DRUM SPILL CONTAINMENT BASE ON WHEELS WITH DRUM DISPENSER STAND (NEW)

FEATURES - This containment base has heavy duty wheels The drum dispenser stand suits 2 x 205Ltr drums



Lot #30 - DRUM SPILL CONTAINMENT TROLLEY WITH DRUM DISPENSER STAND

FEATURES - Containment base has heavy duty wheels. The dispenser stand suits 2 x 205 Ltr drums.



Lot #31 - ENGINEERS LATHE, TRUPRO, TPG 1340, 330 x 1000 , 2 HP, 1 PHASE (USED, EX SCHOOL TRADE-IN)

Please note: This lathe is missing a toolpost holder.

SPECIFICATIONS- Swing Over Bed 330 mm

Swing Over X Slide 198 mm

Swing Over Gap 476 mm

Between Centres 1000 mm

Bed Width 187 mm

Spindle Nose D1-4

Speeds 8

Speed Range 70 - 2000 rpm

Spindle Bore 38 mm

Spindle Taper MT5

Metric Threading 0.45 - 10 M

Imperial Threading 2.1/4 - 40 tpi

Tailstock Taper MT3

Tool Height 16 mm

Motor 1.5 kW

Voltage 230 v

Weight 670 kg

Volume 2.22 m3

Size 1950 x 760 x 1500 L x W x H



Lot #32 - ENGINEERS LATHE, TRUPRO TPG1340, 330 X 1000, 2HP, 1 PHASE (USED, EX SCHOOL TRADE-IN)

PLEASE SEE LOT 31 FOR SPECIFICATIONS . PLEASE NOTE: BOTH LOTS 31 AND LOT 32 ARE MISSING THE TOOLPOST HOLDERS.



Lot #33 - LATHE MILL COMBINATION MACHINE, MODEL WM- 250V, 1 PHASE (USED, NEEDS ATTENTION. MACHINE HAS TIPPED BACKWARDS)

MILLING HEAD SPECIFICATIONS - Speed Range: 50 - 2250 rpm

Table size 500 x 180 mm

Spindle Taper MT2

Motor Power 0.6 kW

LATHE SPECIFICATIONS Swing Over Bed 240 mm

Distance Between Centres 750 mm

Speed Range 50 -2000 rpm

Spindle Bore 26 mm

Tailstock Taper MT2

Tool Height 12 mm

Motor Power 0.75 kW

FEATURES - Variable speed controls on both lathe and milling head.

Induction hardened & precision ground bedways

Large 38 mm spindle bore

Fine down feed adjustments of the milling head.

Milling head can be tilted +/- 90*

Fitted with digital readout 7 quick change toolpost.

Accessories as per photograph.



Lot #34 - POWERED SWAGE AND JENNY ETB-12, 1 PHASE (NEAR NEW RETURNED. POWERS UP, BUT TRIPS BREAKER AFTER CONTINUOUS USE. FAULT NOT RECTIFIED)

SPECIFICATIONS - Capacity 1.2 mm

Shaft Clearance 140 mm

Throat Depth 200 mm

Cylinder Speed 32 rpm

Wheel Sets to be advised

Voltage 240 V

Motor Power 0.75 kW

FEATURES - Heavy cast iron construction

Adjustable idle roller

Self-braking motor with subframe.

Foot pedal control



Lot #35 - POWERED SWAGE AND JENNY, ETB-12, 1 PHASE (USED, HAS AN ELECTRICAL FAULT)

For Specifications see Lot 34



Lot #36 - FILE MACHINE, STEELFAST, (OLD BUT IN WORKING CONDITION)

The File Machine comes with a box of assortment of files.



Lot #37 - METAL CUT-OFF SAW, THOMAS, MODEL SUPER CUT 315, YEAR 2021, USED, WORKING.

SPECIFICATIONS - Blade Size 315 mm

Bore 32 mm

Cap Round 90* 95 (80 Solid) mm

Cap Round 45* 90 (70 Solid) mm

Cap Square 90* 80 x 80 mm

Cap Square 45* 75 x 75 mm

Cap Rectangular 90* 100 x 70 mm

Cap Rectangular 45* 80 x70 mm

Speeds 1

Speeds 41 rpm

Vice Opening 110 mm

Coolant Tank 5 Ltr

Voltage 240 v

Motor Power 1.5 kW



Lot #38 - SERVICE TIPPING BIN ON HEAVY DUTY WHEELS, 350KG CAPACITY, COLOUR GREY (NEW)

FEATURES - Tipping Bin has foot operated tipping mechanism.

Dimensions - 1000 x 600 x 870 mm

Heavy Duty Wheels



Lot #39 - SERVICE TIPPING BIN WITH FORKLIFT LIFTING POCKETS, 900KG CAPACITY (NEW SHOP SOILED)

FEATURES - Has trip action for easy unloading

Forlift Lifting Pockets

900 kg Capacity

Dimensions 1500 x 800 x 1000 mm L x W x H



Lot #40 - SERVICE TIPPING BIN WITH FORKLIFT LIFTING POCKETS, 900KG CAPACITY (NEW SHOP SOILED)

FEATURES - Has trip action for easy unloading

Forlift Lifting Pockets

900 kg Capacity

Dimensions 1500 x 800 x 1000 mm L x W x H



Lot #41 - SERVICE TIPPING BIN WITH FORKLIFT LIFTING POCKETS, 900KG CAPACITY (NEW SHOP SOILED)

FEATURES - Has trip action for easy unloading

Forlift Lifting Pockets

900 kg Capacity

Dimensions 1500 x 800 x 1000 mm L x W x H



Lot #42 - SERVICE TIPPING BIN WITH FORKLIFT LIFTING POCKETS, 900KG CAPACITY (NEW SHOP SOILED)

FEATURES - Has trip action for easy unloading

Forlift Lifting Pockets

900 kg Capacity

Dimensions 1500 x 800 x 1000 mm L x W x H



Lot #43 - SERVICE TIPPING BIN WITH FORKLIFT LIFTING POCKETS, 900KG CAPACITY (NEW SHOP SOILED)

FEATURES - Has trip action for easy unloading

Forlift Lifting Pockets

900 kg Capacity

Dimensions 1500 x 800 x 1000 mm L x W x H



Lot #44 - SERVICE TIPPING BIN, WITH FORKLIFT LIFTING POCKETS, 700 KG CAPACITY. (NEW SHOP SOILED)

FEATURES - Has trip action for easy unloading.

700 kg capacity

Forklift lifting pockets

Dimensions 1250 x 750 x 950 mm L x W x H



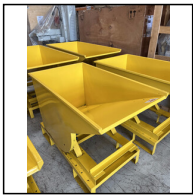
Lot #45 - SERVICE TIPPING BIN, WITH FORKLIFT LIFTING POCKETS, 700 KG CAPACITY. (NEW SHOP SOILED)

FEATURES - Has trip action for easy unloading.

700 kg capacity

Forklift lifting pockets

Dimensions 1250 x 750 x 950 mm L x W x H



Lot #46 - SERVICE TIPPING BIN, WITH FORKLIFT LIFTING POCKETS, 700 KG CAPACITY. (NEW SHOP SOILED)

FEATURES - Has trip action for easy unloading.

700 kg capacity

Forklift lifting pockets

Dimensions 1250 x 750 x 950 mm L x W x H



Lot #47 - SERVICE TIPPING BIN, WITH FORKLIFT LIFTING POCKETS, 700 KG CAPACITY. (NEW SHOP SOILED)

FEATURES - Has trip action for easy unloading.

700 kg capacity

Forklift lifting pockets

Dimensions 1250 x 750 x 950 mm L x W x H



Lot #49 - BELT / EDGE SANDER WITH CAST IRON SLOTTED WORK TABLE (USED, NEEDS REPAIR IN THE DRIVE DRUM)

PLEASE NOTE - This machine needs a repair on the shaft mounted belt drive drum

Comes with a 1.5 HP, 230v, 2850 rpm electric motor.



Lot #50 - MILLER MODEL 330A/BP CY50, AC/DC WELDER COMPLETE WITH LEADS, TORCHES, GAUGES, FOOT CONTROL. (USED, WORKING)



Lot #51 - DOUBLE ENDED GRINDER 3PH (USED)

SPECIFICATIONS - Power - 2kW / 380 V

RPM - 1440



Lot #52 - VICE MOUNTED SHEETMETAL SLIP ROLLS

FEATURES - Capacity Mild Steel 1 mm

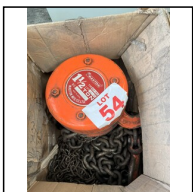
Roll Diameter 35 mm

Min Form Radius 38 mm

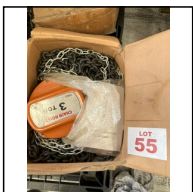
Grooves for rolling wire



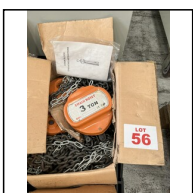
Lot #53 - CHAIN HOIST, HS TYPE, 5 TON, LIFT HEIGHT 3M (USED)



Lot #54 - CHAIN HOIST, MAXON 1 1/2 TON, TYPE MX-HC, LIFT 10 FT (USED)



Lot #55 - CHAIN HOIST, 3 TON, LIFT HEIGHT 3M, WEIGHT 27KG (NEW)



Lot #56 - CHAIN HOIST, 3 TON, LIFT HEIGHT 3M, WEIGHT 27KG (NEW)



Lot #57 - CHAIN HOIST, 2 TON, LIFT HEIGHT 3M, WEIGHT 18 KG (NEW)



Lot #58 - CHAIN HOIST, 3 TON, LIFT HEIGHT 3M, WEIGHT 27KG (NEW)



Lot #59 - CHAIN HOIST, TRUPRO, 3 TON (USED)



Lot #60 - CHAIN HOIST, 2 TON, LIFT HEIGHT 3M, WEIGHT 18KG (NEW)



Lot #61 - CHAIN HOIST, 3 TON, LIFT HEIGHT 3M, WEIGHT 27KG (NEW)



Lot #62 - PRECISION ANGLE VICE, 3 WAY, 6 INCH WITH SWIVEL BASE (NEW)

SPECIFICATIONS - Jaw width 6 inch

Angles Angles and Swivels

Graduations Yes

Base Swivel



Lot #63 - ELECTRIC MOTOR, 3 HP, 1 PHASE (SLIGHTLY USED ON A MACHINE ,CHANGED FOR A 3 PHASE MOTOR)

PLEASE NOTE. Small wiring cover plate missing. Has come off a machine and replaced with a 3 Phase motor.

SPECIFICATIONS - 230 Volt, 3 HP, 2 Pole, 50 Hz, 2850 rpm



Lot #64 - MACHINE VICE , HEAVY DUTY (NEW SHOP SOILED. THIS VICE WAS USED IN A DEMO OF A CNC MACHINE)



Lot #65 - THREADING MACHINE, 1/2 INCH -2 INCH COMPLETE WITH PIPE CUTTER, REAMER AND AUTOMATIC DIE HEAD (NEAR NEW)

SPECIFICATIONS - Motor 1.15 kW

Speeds 40 rpm

Voltage 240 V



Lot #66 - THREADING MACHINE, ASADA BEAVER 50, 1 PHASE. (Used / No die head with this machine)

PLEASE NOTE: This machine is missing the diehead which is readily available from stockist including Chevpac . Cost to be advised on enquiry

FEATURES - Motor 750 W

Voltage 230 V



Lot #67 - HYDRAULIC PIPE BENDER , MODEL HHW-3, (3 INCH) WITH FORMERS (NEW).

SPECIFICATIONS - Range 1/2" - 2"

Formers 8

Stroke 290 mm

Wall Thickness 5.0 mm

Max Force 20 Ton

Weight 108 kg/ Nett 117 kg/ Gross



Lot #68 - HYDRAULIC PIPE BENDER WITH AIR ASSIST , MODEL HHW-3Q , (3 INCH) WITH FORMERS, (NEW).

SPECIFICATIONS - Range 1/2" - 2"

Formers 8

Stroke 290 mm

Wall Thickness 5.0 mm

Max Force 20 Ton

Air Assist Yes

Weight 108 kg/ Nett 117 kg/ Gross



Lot #69 - STATIONARY DIESEL ENGINE, 10 HP, RECOIL START (NEW)

SPECIFICATIONS - Engine Rating 7.5 kW

Fuel Tank 5.4 Ltr

Start System Recoil

Cooling Air Cooled

Oil Capacity 1.6 Ltr

Weight 48 kg

Volume 0.2135 m3

Dimensions 697 x 545 x 562 L x W x H



Lot #70 - STATIONARY DIESEL ENGINE, 10 HP, RECOIL START (NEW)

SPECIFICATIONS - Engine Rating 7.5 kW

Fuel Tank 5.4 Ltr

Start System Recoil

Cooling Air Cooled

Oil Capacity 1.6 Ltr

Weight 48 kg

Volume 0.2135 m3

Dimensions 697 x 545 x 562 L x W x H



Lot #71 - AIR DRYER, PNEUTECH, R52000TR, CONDITION UNKNOWN.



Lot #72 - MULCHER MOWER, TOW BEHIND, TYPE AT145A WITH BRIGGS AND STRATTON XR 10 HP MOTOR (USED, TRADE-IN. NEEDS NEW DRIVE BELTS)

PLEASE NOTE; This Mower was traded in for a higher HP unit. Requires new drive belts.

DIMENSIONS- 2050 x 1680 x 980 mm L x W x H



Lot #73 - KOMATSU 18 FORKLIFT (NON RUNNER). SEE PHOTOS FOR DETAILS



Lot #74 - MAGNETIC CORE DRILL WITH METAL CARRY CASE. (NEW) MODEL KBN75/2QD

SPECIFICATIONS - Capacity Core Drilling 75 mm

Cut Depth 225 mm Travel

Tap Capacity 20 mm

Counter Sink 35 mm

Speed 0 - 180/360 mp (no load)

Coolant yes

Tool Holder MT3

Voltage 220 V

Weight 34 kg / 39 kg Nett/Gross

Volume 0.0590



Lot #75 - MAGNETIC CORE DRILL WITH METAL CARRY CASE. (NEW) MODEL KBN75/2QD

SPECIFICATIONS - Capacity Core Drilling 75 mm

Cut Depth 225 mm Travel

Tap Capacity 20 mm

Counter Sink 35 mm

Speed 0 - 180/360 mp (no load)

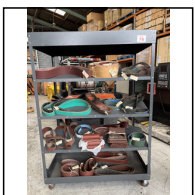
Coolant yes

Tool Holder MT3

Voltage 220 V

Weight 34 kg / 39 kg Nett/Gross

Volume 0.0590



Lot #76 - METAL DISPLAY RACK WITH A LARGE ASSORTMENT OF ABRASIVE BELTS (SEE PHOTOS FOR DETAILS)

This metal rack is mobile with 4 industrial wheels.

The Brown belts are RBX type to suit metal or wood.

The Green belts are Zirco to suit stainless steel.



Lot #77 - METAL DISPLAY RACK WITH A LARGE ASSORTMENT OF ABRASIVE BELTS (SEE PHOTOS FOR DETAILS)

This metal rack is mobile with 4 industrial wheels.

The Brown belts are RBX type to suit metal or wood.

The Green belts are Zirco to suit stainless steel.



Lot #78 - WEITING MODEL WT6500, PETROL GENERATOR, 8 kW @ 3,600 RPM (WORKING FIELD DEMO MODEL)

SPECIFICATIONS - Rated Voltage 230 v

Rated Current 21.7 A

Rated Watts 5.5 kW

Surge Watts 6.875 kW

Output 8 kW @ 3600 rpm

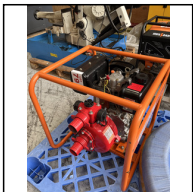
Start Type Recoil

Tank Capacity 25 Ltr

FEATURES - Petrol Generator has 100% copper windings

Suitable for running sensitive equipment.

Low oil alerts ensures the unit is protected at all times



Lot #79 - WATER PUMP DIESEL, VISION MODEL DHP50, CAPACITY 33 m3/h WITH 2" DELIVERY HOSE AND STRAINER

SPECIFICATIONS - Engine model JD 178F

Suction Discharge 50 mm

Capacity 33 m3/h

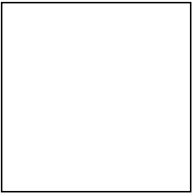
Head 52 m

Engine Speed 3600 rpm

Suction Head 5 m

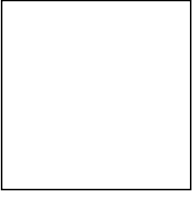
Dry Weight 42 kg

Air Cooled Yes



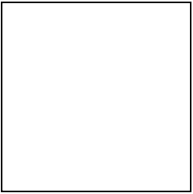
Lot #80 - PORTABLE BELT GRINDERS X 34

34 X Belt Grinders to suit a 4" Grinder



Lot #81 - ANVIL 40KG

Anvil 40kg



Lot #82 - PALLET TRUCK, SMALL, 500KG CAPACITY (NEW)

Pallet truck, small, 500kg capacity



Conditions of Sale

As is where is

1.0 The purchase of the goods shall be on an "as is where is" basis.

Inspection

2.0 It is deemed that the Purchaser or their agent have made the appropriate inspection of the goods and that the purchase is based on knowledge of the condition of the goods.

Warranty

3.0 No warranties, expressed or implied are given, or representations made, in respect of the plant, vehicles or equipment offered; whether as to condition, title, the suitability of such items for any particular purpose. Neither the Vendor nor Tender Manager accept any responsibility for the accuracy or completeness of any statements in the documents.

3.1 No warranties expressed or implied are given to the effect that the items comply with the requirements of any Statute, Regulation, Order or Bylaw. It shall be the sole responsibility of the Purchaser to ensure that the requirements of all Statutes, Regulations or Bylaws are complied with in relation to the machinery, vehicles or electrical equipment purchased.

Payment

4.0 Payment: Bank-to-bank transfer only. Please note that company cheques are not accepted

4.1 The purchaser or their agent must produce a copy of the paid GST invoice receipt to the onsite sales supervisor on the prescribed uplifting days for the items to be released.

Title

5.0 Title to the goods shall transfer to the successful Purchaser upon full payment of the purchase price.

Pickup

6.0 Pickup shall be ex the location as specified.

6.1 The purchaser shall be entitled to take delivery of the item/s only on payment of the total purchase price and only on the prescribed uplifting days.

6.2 The item/s shall be at the sole risk of the purchaser from time of payment.

6.3 The purchaser shall be responsible for all costs related to the removal of the item/s, including electrical and other service disconnection, decommissioning, loading, packaging, storage and security commencing immediately on purchase of the items.

6.4 The Purchaser shall be responsible for all costs related to the making good of the building, floor, roof, walls, property and services, where damage to, change to, is a result of removal of an item of plant or equipment.

6.5 Tender Manager will require evidence of the Purchaser or their agents capacity to dismantle /remove major plant items in a safe manner, prior to any work being carried out on the Vendors site. Appropriate Public Liability Insurance will also be required.

Occupational Safety and Health

7.0 The purchaser and their representatives, must at all times while on the Vendor's site, comply with the relevant Health and Safety Acts and all other relevant legislation.

Liability

8.0 Risk of loss or damage, whether to the goods or persons or property, shall pass to the purchaser upon the transfer of title.

Law

9.0 The sales of goods shall be governed by the law of the country where the goods are located.

Default

10.0 If the purchaser fails to pay the full price within 7 days from the date of notification that it's Tender was successful, the Vendor may in its sole discretion cancel the sale. Such cancellation is without prejudice to any other remedies available to the Vendor under contract or law for damages or otherwise.

10.1 If the Purchaser pays for the item/s but fails to take delivery within the prescribed uplifting days, the Vendor may, after giving notice to do so, sell or dispose of item/s and apply any proceeds arising there from as follows: (i) in reimbursement of all costs of the selling or otherwise disposing of the item/s (ii) in payment for any residue, after reimbursement of (i), to the purchaser of the items.

10.2 In addition to all the other remedies, the Tender manager reserves the right to refuse to consider any future Tenders from any purchaser who has defaulted under clause 10.0 + 10.1

Sale Management

11.0 The sale is being managed by Tender Manager, on behalf of the Vendor. Tender Manager is not authorized to express opinions, to offer advice or make representations to purchasers or to the public concerning the items which are the subject of this sale, and does not offer any warranties, representations or undertakings to any such parties.