



S&T PLASTICS LABORATORY (HDPE PIPE MANUFACTURER) CATALOGUE

For any queries phone:

Bill 027 778 8552

Rex 021 0810 0774

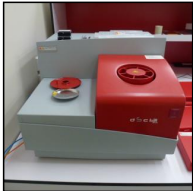
Viewing Location



S & T Plastics, 3 Pukaki Road, Yaldhurst, Christchurch.

Lot #1 - SCITEQ MELT FLOW INDEXER- FOR THERMOPLASTICS

TYPE MFI 450 C1...NO-25582-05-2017,MELT FLOW INDEXER WITH TOUCH SCREEN PANEL AND AUTOMATIC WEIGHT LOADING.PERFORMS MELT MASS FLOW RATE(MFR) AND MELT VOLUME FLOW RATE(MVR) TESTING ACCORDING TO BS2782 PART 7:METHOD 720A, ISO 1133 AND ASTM 1238 METHODS A & B OR EQUIVALENT.COMES WITH OPERATING MANUAL, ACCESSORIES, SOFTWARE, WEIGHTS.USED TO TEST THE MELT FLOW RESISTANCE OF A WIDE RANGE OF THERMO PLASTIC MATERIALS. RETAIL PRICE-\$19,035.00



Lot #2 - SETARAM DSC 131 EVO DIFFERENTIAL THERMAL SAMPLE ANALYSER

MODEL-DSC 131 EVO ANALYZER INCLUDING HEATING ELEMENT WITH A TEMPERATURE RANGE FROM AMBIENT UP TO (700 DEGREE C) AND SCANNING TEMPERATURE RATE FROM 0.01 TO 100 DEGREE C / MIN.HEAT FLUX DSC SENSOR S60/38256 RESOLUTION:0.8UW,RMS NOISE:1.5 UW AT 200 DEGREE C MEASURING RANGE:+/- 6000 mW, TIME CONSTANT:3S.AIR COOLING ENCLOSURE.GAS SWEEPING FITTING.AUTOMATIC GAS SWITCHING SYSTEM. CS EVOLUTION CONTROLLER WITH 32 BITS MICROPROCESSOR ,24 BITS A /D CONVERTER AND ETHERNET CONNECTION.COMPLETE WITH OPERATING MANUALS, CRUCIBLES,ACCESSORIES, SOFTWARE. RETAIL PRICE-\$53,271.00



Lot #3 - ZUFA DIFFERENTIAL SCANNING CALORIMETER

MODEL-ZF-DSC-D1..NO MANUALS.



Lot #4 - OLYMPUS ULTRASONIC THICKNESS GAUGE

MODEL 45 MG, COMES WITH OPERATING MANUAL C.D.



Lot #5 - LUTRON THERMOMETER

MODEL TM2000 THERMOMETER



Lot #6 - PITAPE PRECISION MEASURING TAPES

2X(100-300MM DIA) 2X(300-600MM DIA) 1X(600-900MM DIA) 3X(900-1200MM DIA)
1X(1200-1500MM DIA) 1X(50-600MM DIA) 1X(1500-1800MM DIA)



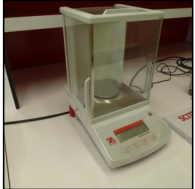
Lot #7 - PITAPE PRECISION MEASURING TAPES (NEW)

PITAPE MADE IN USA. 2X(1200-1500MM DIA) 1X(100-300MM DIA) 1X(300-600MM DIA)
1X(600-900MM DIA)



Lot #8 - KERN ELECTRONIC MOISTURE ANALYSER

MODEL DAB 100-3 COMES WITH OPERATING MANUAL. 220/240V.



Lot #9 - OHAUS ADVENTURER DENSITY BALANCE MEASURING APPARATUS

MODEL-AR124CN....MAX-120g....D=0.0001g....E=0.001g



Lot #10 - HEAT REVERSION OVEN

IANZ SERIAL NO-S401680/01..LAST TESTED 16/11/2017..DUE-16/11/2018..INSIDE
MEASUREMENTS-550 (W) X 450MM (D) X 550(H)..REFERENCE INSTRUMENT-111.5 C..SENSOR
READING-110.0 C..CORRECTION+ 1.5 C



Lot #11 - DATA LOGGING STATION (JINGMI)

JINGMI DATA LOGGING STATION.



Lot #12 - PRECISION PLASTIC PIPE HYDRAULIC PRESSURE TESTING MACHINE

JINGMI MODEL-XGNB-N-B YEAR-2014..SPEC-10 MPA..VOLTAGE-415V 50 HZ POWER-0.6W..



Lot #13 - ELECTRONIC COMPRESSION TENSILE CLAMP MACHINE

JINGMI....MACHINE TYPE-WDT-W..SPECS-100 KN..YEAR-2014..VOLT-240 50 HZ



Lot #14 - WISHBONE SAMPLE MACHINE FOR UNIVERSAL TESTER

WISHBONE SAMPLE MACHINE FOR UNIVERSAL TESTER



Lot #15 - SCITEQ STATIC / BURST PRESSURE TESTING EQUIPMENT

COMPRISING: SCITEQ X-ACT PRESSURE CABINET FOR SCITEQ X-ACT MODULES.
EXTREMELY COMPACT DESIGN ALLOWS FOR INSTALLATION OF UP TO 40 PRESSURE
STATIONS AND A POWER PACK WITHIN A FOOT PRINT OF 800 X 800MM.(CURRENTLY
OPERATING 13 X CHANNELS)

SCITEQ X -ACT PRESSURE PP100/160 POWER PAC MODULE WITH NOMINAL 100 OR 160 BAR REGULATED OUTPUT WITH MAX WATER FLOW OF 8.5 L/MIN INCLUDING HIGH PRESSURE PUMP WITH RESERVOIR AND 10 my FINE FILTER FOR TAP WATER.

SCITEQ X -ACT PRESSURE SUB10-100 MODULE PROVIDES 10 COMPLETELY INDEPENDENT PRESSURE STATIONS UP TO 100BAR. EACH STATION IS CAPABLE OF SUPPLYING A MAX FLOW OF 2L/M AT RATED PRESSURE. FULLY OPERATIONAL THROUGH IN S40 GRAPHIC OPERATOR PANEL WITH 5.7 INCH TFT DISPLAY,320 X 240 PIXEL, 16 COLOURS, ADJUSTABLE LED BACKLIGHT.

ORIGINAL INVOICE PRICE (03/11/2017) NZ\$93,500.00

COMPLETE WITH:

A)MERCER PRESSURE WATER TANK WITH HEATING SYSTEM, PIPEWORK AND CONTROL PANEL/DATA LOGGER,IANZ CALIBRATED-16/11/2017.INSIDE DIMENSIONS-(3450MM (L) X 2090MM(W) X 2360MM(H).OVERALL DIMENSIONS-4030MM(L) X 2390MM X 2360MM LID.

ORIGINAL INVOICE PRICE (24/11/2017) NZ\$134,500.00

B)CHINESE MADE PRESSURE WATER TANK WITH YOKOGAWA CONTROLLER.IANZ CALIBRATED-16/11/17..OVERALL DIMENSIONS-3230 MM(L) X 2135MM(W) X 1920MM + LID 60MM.

C)INTEREC AIR COMMAND AIR COMPRESSOR, MODEL-INDUSTRIAL 7.5, MADE IN ITALY-KW-5.5..H.P-7.5..YEAR-2016, TYPE LT 270.

D)FLOOR MOUNTED WATER DRAIN SYSTEM WITH SEAFLO PUMP AND DISCHARGE HOSE TO COUNCIL INFRASTRUCTURE- 5000MM (L) X 2350(W) X 55MM(H)

* DECOMMISSION/EXTRACTION/LOADING COSTS-\$12,000.00 + GST

* ELECTRICAL DECOMMISSIONING COST FOR THIS LOT IS-(\$490.00 + GST)

Transport of any items locally would be \$150.00 + gst an hour.



Lot #16 - SAMPLE PIPE ROTATOR

SAMPLE PIPE ROTATOR WITH MANUAL OPERATED GEARBOX TO SUIT-1100MM..1200MM..1400MM..1600MM PIPE .



Lot #17 - EASY ACCESS PLATFORM LADDER WITH SAFETY CAGE

1400MM TO PLATFORM...OVERALL DIMENSIONS-2390MM (H) X 1420MM (D) X 920MM (W).



Lot #18 - MOBILE PIPE ROLLER TROLLEY

MOBILE PIPE ROLLER TROLLEY. OVERALL DIMENSIONS-1800MM (L) X 1250MM (W) X 600MM(H).



Lot #19 - PAIR OF STAINLESS STEEL PRESSURE END CAPS-160MM

PAIR OF STAINLESS STEEL PRESSURE END CAPS-160MM.



Lot #20 - PAIR OF STAINLESS STEEL PRESSURE END CAPS-200MM

PAIR OF 200MM STAINLESS STEEL PRESSURE END CAPS.



Lot #21 - PAIR OF STAINLESS STEEL PRESSURE END CAPS-225MM

PAIR OF 225MM STAINLESS STEEL PRESSURE END CAPS.



Lot #22 - PAIR OF STAINLESS STEEL PRESSURE END CAPS-250MM

PAIR OF 250MM STAINLESS STEEL PRESSURE END CAPS.



Lot #23 - PAIR OF MILD STEEL PRESSURE END CAPS-280MM

PAIR OF 280MM MILD STEEL PRESSURE END CAPS.



Lot #24 - PAIR OF MILD STEEL PRESSURE END CAPS-315MM

PAIR OF 315MM MILD STEEL PRESSURE END CAPS.



Lot #25 - PAIR OF MILD STEEL PRESSURE END CAPS-355MM

PAIR OF 355MM MILD STEELPRESSURE END CAPS.



Lot #26 - PAIR OF MILD STEEL PRESSURE END CAPS-400MM

PAIR OF 400MM MILD STEEL PRESSURE END CAPS.



Lot #27 - PAIR OF MILD STEEL PRESSURE END CAPS-450MM

PAIR OF 450MM MILD STEEL PRESSURE END CAPS.



Lot #28 - PAIR OF MILD STEEL PRESSURE END CAPS-500MM

PAIR OF 500MM MILD STEEL PRESSURE END CAPS.



Lot #29 - PAIR OF MILD STEEL PRESSURE END CAPS-560MM

PAIR OF 560MM MILD STEEL PRESSURE END CAPS.



Lot #30 - PAIR OF MILD STEEL PRESSURE END CAPS-630MM

PAIR OF 630MM MILD STEEL PRESSURE END CAPS.



Lot #31 - PAIR OF MILD STEEL PRESSURE END CAPS-710MM

PAIR OF 710MM..MILD STEEL PRESSURE END CAPS.



Lot #32 - PAIR OF MILD STEEL PRESSURE END CAPS-800MM

PAIR OF 800MM MILD STEEL PRESSURE CAPS.



Lot #33 - PAIR OF MILD STEEL PRESSURE END CAPS-900MM

PAIR OF 900mm MILD STEEL PRESSURE END CAPS.



Lot #34 - PAIR OF MILD STEEL PRESSURE END CAPS-1000MM

PAIR OF 1000MM MILD STEEL PRESSURE END CAPS.



Lot #35 - PAIR OF MILD STEEL PRESSURE END CAPS-1100MM

PAIR OF 1100MM MILD STEEL PRESSURE END CAPS.



Lot #36 - PAIR OF MILD STEEL PRESSURE END CAPS-1200MM

PAIR OF 1200MM MILD STEEL PRESSURE END CAPS.



Lot #37 - PAIR OF MILD STEEL PRESSURE END CAPS-1400MM

PAIR OF 1400MM MILD STEEL PRESSURE END CAPS.



Lot #38 - PAIR OF MILD STEEL PRESSURE END CAPS-1600MM

PAIR OF 1600MM MILD STEEL PRESSURE END CAPS .



Lot #39 - LIFTING CHAIN (2 LEG)STAINLESS STEEL.

STAINLESS STEEL..10MM..2-3M LONG..SINGLE LEG LIFT@1600 KGS....MULTI LEG LIFT @2720 KGS..WITH "D" SHACKLES.



Lot #40 - 2 X LIFTING CHAIN LEGS- STAINLESS STEEL

STAINLESS STEEL..10MM..2.2 METRES LONG- LIFT 1600 KGS WITH "D" SHACKLES.



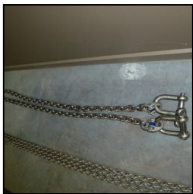
Lot #41 - STAINLESS STEEL LIFTING CHAIN

2 LEG LIFTING CHAIN...2.2 METRES LONG..7 MM..MULTI LEG LIFT-2100MM.SINGLE LEG LIFT-1250MM WITH "D" SHACKLES.



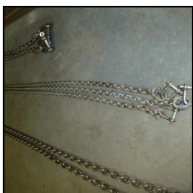
Lot #42 - STAINLESS STEEL LIFTING CHAIN

STAINLESS 2 LEG LIFTING CHAIN...2.7 METRES LONG- SIZE-7MM..SINGLE LEG LIFT-1250 KGS.



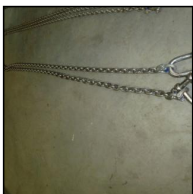
Lot #43 - STAINLESS STEEL LIFTING CHAIN

2 LEG LIFTING CHAIN..LENGTH-1.6 METRES..SIZE-7MM..SINGLE LEG LIFT-1250KG...DOUBLE LEG LIFT-2100 KG.



Lot #44 - STAINLESS STEEL LIFTING CHAIN

3 X SINGLE LEG LIFTING CHAIN..SPECS UNKNOWN.



Lot #45 - STAINLESS STEEL LIFTING CHAIN

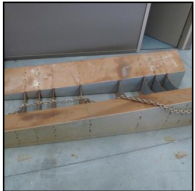
2 X SINGLE LEG LIFTING CHAIN..LENGTH 2.2 METERS..1280 KG..

**Lot #46 - POWER LEAD**

1 X 20 METER APPROX...SINGLE PHASE EXTENSION CORD..PDL 15A..250V..50 HZ.

**Lot #47 - POWER LEAD**

1 X 20 METER APPROX...3 PHASE POWER CABLE...PDL-20A..500V..50 HZ..5 PIN PLUG..

**Lot #48 - STAINLESS STEEL PIPE LIFTING JIG**

DIMENSIONS-2105MM (L) X 900(W) X 380 (H). THIS JIG IS DESIGNED TO HOLD 1200MM-1600MM SAMPLE PIPE TO EMMERSE IN A PRESSURE TANK. IT HAS A TAPER TO ONE END TO ENABLE THE PIPE TO DRAIN.

**Lot #49 - PALLET RACKING**

6 X BAYS....7 X UPRIGHTS...36 X BEAMS..SPECS: BAY DEPTH-900MM..BEAM LENGTH-2700MM...UPRIGHT HEIGHT-4200MM..UPRIGHT WIDTH-90MM. CONTENTS NOT INCLUDED.

EXTRACTION / LOADING COSTS

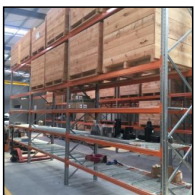
\$1140.00+ GST FOR THIS LOT

**Lot #50 - PALLET RACKING**

10 X BAYS....12 X UPRIGHTS..60 X BEAMS..SPECS: BAY DEPTH-900MM..BEAM LENGTH-2700MM...UPRIGHT HEIGHT-4200MM..UPRIGHT WIDTH-90MM. CONTENTS NOT INCLUDED.

EXTRACTION / LOADING COSTS

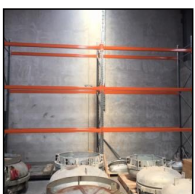
\$1900.00 + GST FOR THIS LOT.

**Lot #51 - PALLET RACKING**

3 X BAYS....6X UPRIGHTS...40 X BEAMS..SPECS: BAY DEPTH-900MM..BEAM LENGTH-2700MM...UPRIGHT HEIGHT-4200MM..UPRIGHT WIDTH-90MM. CONTENTS NOT INCLUDED.

EXTRACTION / LOADING COSTS

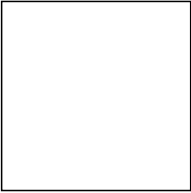
\$570.00 + GST FOR THIS LOT

**Lot #52 - PALLET RACKING**

2 X BAYS....3 X UPRIGHTS...12 X BEAMS..SPECS: BAY DEPTH-900MM..BEAM LENGTH-2700MM...UPRIGHT HEIGHT-4200MM..UPRIGHT WIDTH-90MM. CONTENTS NOT INCLUDED.

EXTRACTION/ LOADING COST

\$380.00 + GST FOR THIS LOT.



Lot #53 - ALL LOTS FROM (1 TO 53) INCLUSIVE

ALL LOTS FROM (1 TO 53) INCLUSIVE.



Lot #54 - PI-TAPE PRECISION MEASURING TAPES

QUANTITY OF PI-TAPE PRECISION MEASURING TAPES- USA



Lot #55 - DIGITAL OUTSIDE MICROMETERS X 5 - DEEP THROAT

SIZES : 0-25, 25-50, 50-75, 75-100, 75-100 MM



Lot #56 - DIGITAL THERMOMETER

LUTRON TM -2000



Lot #57 - DIGITAL CALIPERS X 2

2 X 0-300 MM



Lot #58 - LARGE DIGITAL CALIPER- JINGSTONE

SIZE 0-800MM



Lot #59 - DIGITAL OUTSIDE MICROMETERS X 5 - DEEP THROAT

0-25, 0-25, 25-50, 50-75, 75-100MM



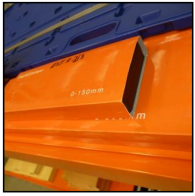
Lot #60 - 2 X DIGITAL MICROMETER (NEW)

JINGSTONE



Lot #61 - LARGE DIGITAL CALIPER

0-1000 MM



Lot #62 - DIGITAL CALIPERS X 2 (ROK BRAND)

0-150MM, 0-300MM,



Lot #63 - WEIGHTS X 2

1 X 5KG AND 1 X 2KG



Lot #64 - GAUGE BLOCKS X 2 SETS - JINGSTONE

150MM - 500MM (8 BLOCKS) GRADE 1;

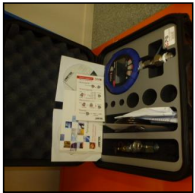
2.5MM - 75MM (12 BLOCKS) GRADE 1



Lot #65 - DIGITAL CALIPERS X 3

1 X STARRETT -0 TO 150 MM

1 X ROK - 0 TO 150 MM



Lot #66 - PRESSURE GAUGE (METEK)

XR2I - 200 BAR. COMES WITH SOFTWARE



Lot #67 - DIGITAL OUTSIDE CALIPERS X 3 - DEEP THROAT

0-25 MM, 25-50 MM, 50-75 MM.

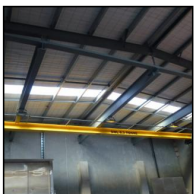


Lot #68 - DIGITAL OUTSIDE CALIPERS X 2 - NEW

JINGSTONE -25-50 MM, DEEP THROAT - 0.001 MM



Lot #69 - WORK BENCH /VICE/ PARTS BINS



Lot #70 - DEMAG OVERHEAD GANTRY HOIST

16 METRE MONO RAIL(NIVEN ENGINEERING) WITH 6.3 TON DEMAG HOIST. MODEL - DEMAG EK DMR-5-6.3-H12/16-6/1-20.7.4.. YEAR OF INSTALLATION - 2017.. NEXT INSPECTION DUE 23/08/2025



Lot #71 - PALLET OF SUNDRY EQUIPMENT

PIPE VALVES ETC, 1 X MOUNT ETC



Lot #73 - PALLET LOT OF BOLTS

20 X CARTONS OF BOLTS.. M12 X 45 MM. STAINLESS SOCKET HEAD BOLTS ETC



Lot #74 - DANGEROUS GOODS CABINET

SIZE 1660 X 870 X 870



Lot #75 - PALLET RACKING GRATES X 23

SIZE 900 X 1245MM



Lot #76 - LABORATORY TABLES

2 X ANTI VIBRATION TABLES...1500MM(W) X 1200MM(D) X 900MM (H)

2X STANDARD LABORATORY TABLES-2500MM(W) X 1200 (D)X 900MM(H) ONE HAS CUT OUT 975MM (W) X 560 (D) COMES WITH TABLE TOP BACK TO BACK SHELF UNITS.
NOTE-CONTENTS NOT INCLUDED.



Lot #77 - HYGRO THERMOMETER

SELLING THIS HYDRO THERMOMETER, VERY LITTLE USE IF ANY.



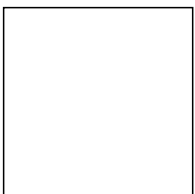
Lot #78 - HYGRO THERMOMETER

HYGRO THERMOMETER NOT IN ORIGINAL BOX.



Lot #79 - WOODEN CRATES

CRATE SIZE- SIZE 1200 X 1000 X 1000 MM. YOU ARE TENDERING ON (1) ONLY. YOU CAN TAKE AS MANY AS YOU REQUIRE.



Lot #80 - LOTS 1-79 INCLUSIVE

ALL LOTS FROM 1 TO 79 INCLUSIVE



Conditions of Sale

As is where is

1.0 The purchase of the goods shall be on an "as is where is" basis.

Inspection

2.0 It is deemed that the Purchaser or their agent have made the appropriate inspection of the goods and that the purchase is based on knowledge of the condition of the goods.

Warranty

3.0 No warranties, expressed or implied are given, or representations made, in respect of the plant, vehicles or equipment offered; whether as to condition, title, the suitability of such items for any particular purpose. Neither the Vendor nor Tender Manager accept any responsibility for the accuracy or completeness of any statements in the documents.

3.1 No warranties expressed or implied are given to the effect that the items comply with the requirements of any Statute, Regulation, Order or Bylaw. It shall be the sole responsibility of the Purchaser to ensure that the requirements of all Statutes, Regulations or Bylaws are complied with in relation to the machinery, vehicles or electrical equipment purchased.

Payment

4.0 Payment: Bank-to-bank transfer only. Please note that company cheques are not accepted

4.1 The purchaser or their agent must produce a copy of the paid GST invoice receipt to the onsite sales supervisor on the prescribed uplifting days for the items to be released.

Title

5.0 Title to the goods shall transfer to the successful Purchaser upon full payment of the purchase price.

Pickup

6.0 Pickup shall be ex the location as specified.

6.1 The purchaser shall be entitled to take delivery of the item/s only on payment of the total purchase price and only on the prescribed uplifting days.

6.2 The item/s shall be at the sole risk of the purchaser from time of payment.

6.3 The purchaser shall be responsible for all costs related to the removal of the item/s, including electrical and other service disconnection, decommissioning, loading, packaging, storage and security commencing immediately on purchase of the items.

6.4 The Purchaser shall be responsible for all costs related to the making good of the building, floor, roof, walls, property and services, where damage to, change to, is a result of removal of an item of plant or equipment.

6.5 Tender Manager will require evidence of the Purchaser or their agents capacity to dismantle /remove major plant items in a safe manner, prior to any work being carried out on the Vendors site. Appropriate Public Liability Insurance will also be required.

Occupational Safety and Health

7.0 The purchaser and their representatives, must at all times while on the Vendor's site, comply with the relevant Health and Safety Acts and all other relevant legislation.

Liability

8.0 Risk of loss or damage, whether to the goods or persons or property, shall pass to the purchaser upon the transfer of title.

Law

9.0 The sales of goods shall be governed by the law of the country where the goods are located.

Default

10.0 If the purchaser fails to pay the full price within 7 days from the date of notification that it's Tender was successful, the Vendor may in its sole discretion cancel the sale. Such cancellation is without prejudice to any other remedies available to the Vendor under contract or law for damages or otherwise.

10.1 If the Purchaser pays for the item/s but fails to take delivery within the prescribed uplifting days, the Vendor may, after giving notice to do so, sell or dispose of item/s and apply any proceeds arising there from as follows: (i) in reimbursement of all costs of the selling or otherwise disposing of the item/s (ii) in payment for any residue, after reimbursement of (i), to the purchaser of the items.

10.2 In addition to all the other remedies, the Tender manager reserves the right to refuse to consider any future Tenders from any purchaser who has defaulted under clause 10.0 + 10.1

Sale Management

11.0 The sale is being managed by Tender Manager, on behalf of the Vendor. Tender Manager is not authorized to express opinions, to offer advice or make representations to purchasers or to the public concerning the items which are the subject of this sale, and does not offer any warranties, representations or undertakings to any such parties.